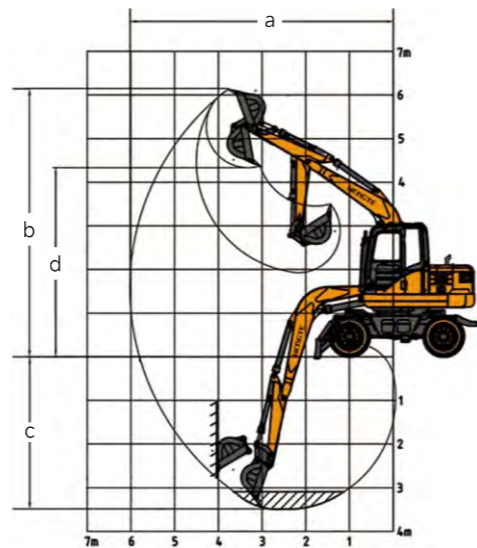
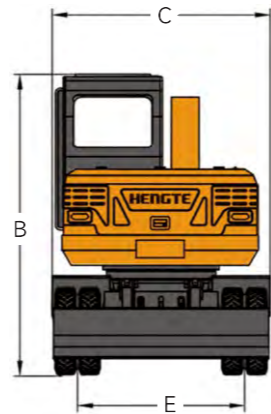
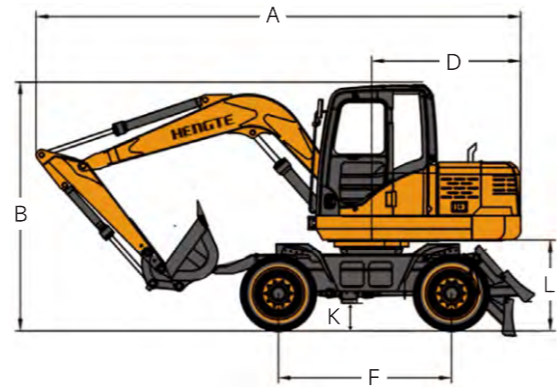


Technical parameters			HT80W	
Engine		Scope of work		
Engine model	YUCHAI YC4FA65-T300	Max. excavation radius	6385mm	
Power	48KW/2200rpm	Max. unloading height	5160mm	
Weight		Bucket		
Weight of whole machine	7090kg	Bucket capacity	0.30m³	

Overall Dimension			HT80W	
Describe	Unit	Size		
A. Shipping length	mm	6200		
B. Total height during	mm	2900		
C. Overall width	mm	2180		
D. Tail turning radius	mm	1855		
E. Track width	mm	1665		
F. Wheelbase	mm	2350		
G. Boom length	mm	3500		
H. Stick length	mm	1800		
I. Bulldozer size	mm	2150*500		
J. Bulldozer lifting/support height	mm	380/60		
K. Min. ground clearance	mm	220		
L. Ground clearance of counterweight	mm	960		

Scope of work and excavation force			HT80W	
Describe	Unit	Size		
a. Max. excavation radius	mm	6385		
b. Max. excavation height	mm	6910		
c. Max. excavation depth	mm	3435		
d. Max. unloading height	mm	5160		
e. Min. turning radius	mm	1855		
f. Bucket capacity	m³	0.30		
g. Hydraulic system pressure	Mpa	26		
h. Hydraulic system flow rate	L/min	140		
i. Bucket digging force	Kn	45		
j. Dipper arm digging force	Kn	25		
k. Fuel tank capacity	L	120		
l. Hydraulic oil tank capacity	L	130		
m. Gradient	%	≥60		
n. Rotation speed	r/min	12-13		
o. Driving speed	Km/h	30		
p. Braking method	Four wheel air brake/oil brake			
q. Walking mode	Fully hydraulic automatic transmission			



HENGTE



HT80W WHEEL EXCAVATOR

山东帝盟重工机械有限公司
SHANDONG DIAMOND HEAVY INDUSTRY Co., Ltd

Sales Hotline: 400-106-1996
Service Hotline: 400-106-0619
E-mail: ht@ht1996.cn
International Trade: 86-534-7452888
Website: www.ht1996.cn
Address: Shandong Dezhou (Yucheng) National High tech Development
Zone Diamond Industrial Park



(Website)



(WeChat)



(Tiktok)

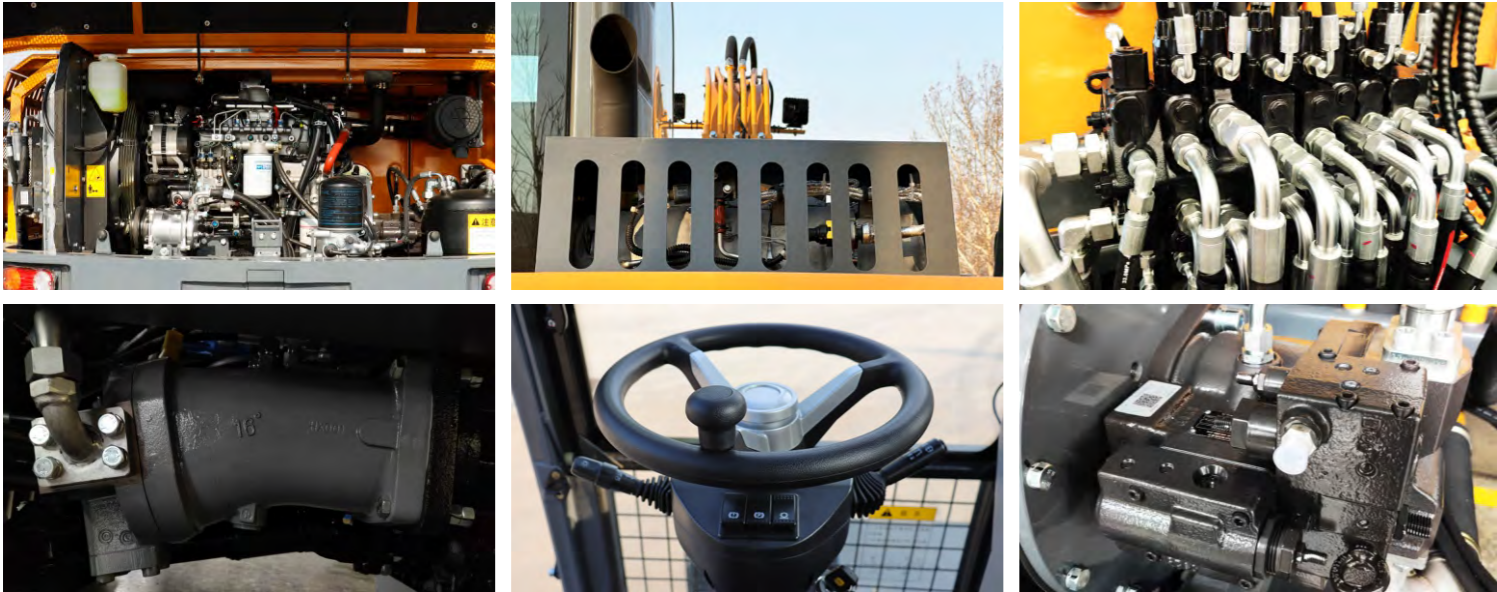
The pictures in this volume are for reference only, and the equipment is subject to the actual object. Shandong DIAMOND Heavy Industry has the right to improve and upgrade the equipment, as well as the final interpretation right.

山东帝盟重工机械有限公司
SHANDONG DIAMOND HEAVY INDUSTRY Co., Ltd

Fully Hydraulic Wheeled Excavator

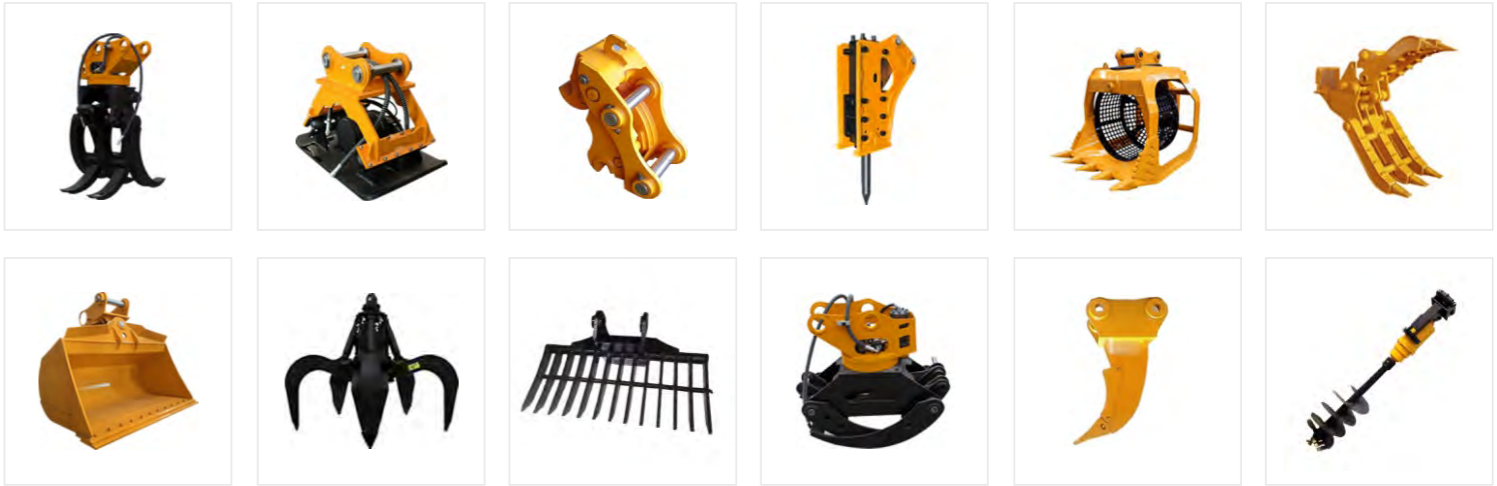


Product Display



The HT80W excavator is a new generation fully hydraulic wheeled excavator independently developed by DIAMOND Heavy Industries, which meets the National III emission standards and adopts a high-power and low fuel consumption standard electronic injection engine, ensuring the strong power and power reserve of the entire machine; The precise matching between the efficient hydraulic system and the bridge box ensures the arbitrary switching between working and walking states; The hydraulic system of the entire machine is matched with a load sensitive system, which has the characteristics of "coordinated action, high reliability, safety and environmental protection, comfort and convenience". At the same time, customized configurations can be provided according to customer needs, which can adapt to the needs of different countries and customers.

Multiple Accessories To Choose From



Convenient Maintenance: Open Panel Design



Advantages

Comfortable

- A spacious and comfortable cab provides a wide and all-round view.
- A new type of suspension seat that conforms to ergonomics, thereby improving the comfort of driver operation.

Configure

- The National III standard electronic fuel injection engine adopts newly developed fuel saving technology, with strong power.
- The original brand's main hydraulic system is perfectly matched with the engine, providing precise flow and improving work efficiency.

Intelligence

- Intelligent driving computer is adopted, with big data analysis and storage function and timely warning prompt.

Energy

- Full time four-wheel drive, equipped with high and low gears, with high-speed walking ability, able to achieve fast transitions.
- High driving power enables the vehicle to have flexible off-road capabilities, ensuring strong off-road performance.