

Technical parameters

HT20

Engine		Scope of work	
Engine model	Yanmar 3TNV76-PCT	Max. excavation radius	4120mm
Power	14.1KW/2200rpm	Max. unloading height	2340mm
Weight		Bucket	
Weight of whole machine	1940kg	Bucket capacity	0.06m ³

Overall Dimension

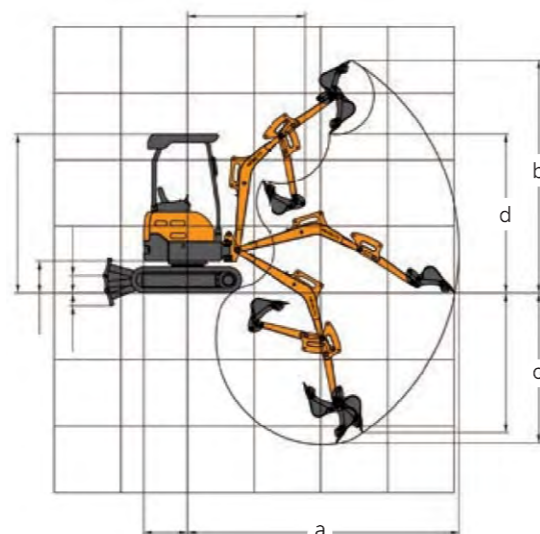
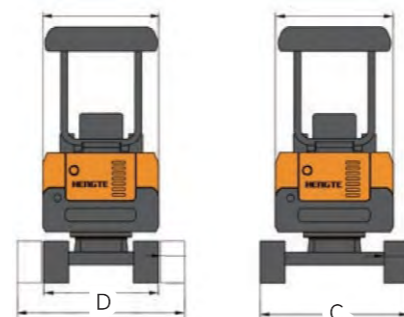
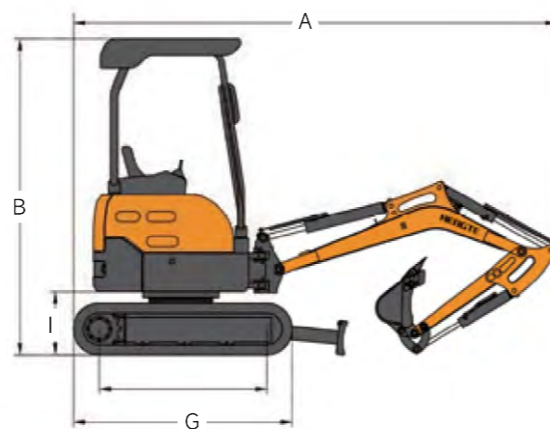
HT20

Describe	Unit	Size
A. Shipping length	mm	3590
B. Total height during	mm	2400
C. Standard chassis	mm	1350
D. Telescopic chassis	mm	990/1300
E. Tail turning radius	mm	640
F. Turntable width	mm	996
G. Track length	mm	1600
H. track width	mm	230
I. Ground clearance of counterweight	mm	490
J. Minimum ground clearance	mm	180
K. Bulldozer size (width * height)	mm	1300*200
L. Bulldozer lifting height	mm	270

Scope of work and excavation force

HT20

Describe	Unit	Size
a. Max. excavation radius	mm	4120
b. Max. excavation height	mm	3500
c. Max. excavation depth	mm	2300
d. Max. unloading height	mm	2340
e. Hydraulic system pressure	Mpa	18.6
f. Hydraulic system flow rate	L/min	56
g. Fuel tank capacity	L	12
h. Hydraulic oil tank capacity	L	21
i. Arm swing angle	°	0-90
j. Bucket digging force	Kn	12
k. Dipper arm digging force	Kn	9
l. Fuel tank capacity	m ³	0.06
m. Rotation speed	r/min	10
n. Driving speed	Km/h	2-3



HT20 MINI EXCAVATOR

山东帝盟重工机械有限公司

SHANDONG DIAMOND HEAVY INDUSTRY Co., Ltd

Sales Hotline: 400-106-1996
 Service Hotline: 400-106-0619
 E-mail: ht@ht1996.cn
 International Trade: 86-534-7452888
 Website: www.ht1996.cn
 Address: Shandong Dezhou (Yucheng) National High tech Development Zone Diamond Industrial Park



(Website)



(WeChat)



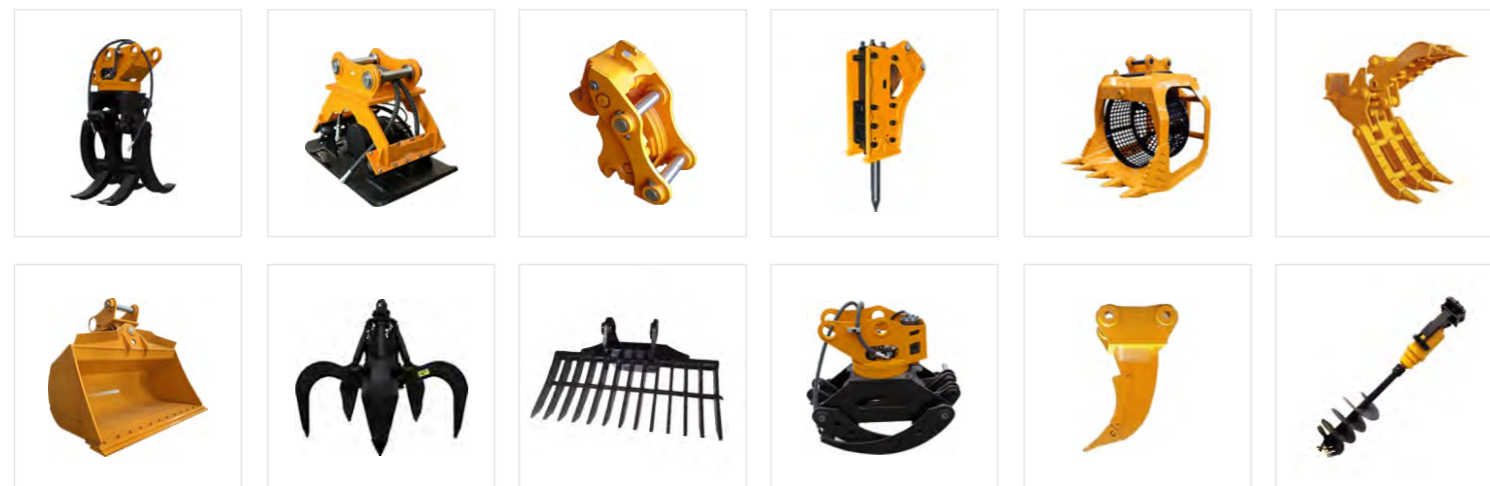
(Tiktok)

The pictures in this volume are for reference only, and the equipment is subject to the actual object. Shandong DIAMOND Heavy Industry has the right to improve and upgrade the equipment, as well as the final interpretation right.

The new generation of fully hydraulic MINI excavators



Multiple Accessories To Choose From



Grand Landing on CCTV's "China's Great Experts" Program



Advantages

Brand engine

- Equipped with low fuel consumption National III standard engines it is more environmentally friendly and powerful.

Imported hydraulic system

- The entire hydraulic system is matched with imported hydraulic components.

Tailless rotary design

- 360° tailless rotation design, compact structure, flexible and convenient.

Track exchange

- Steel tracks and rubber tracks can be directly replaced.

Deflection arm

- Using a deflection arm, with a 90 degree deflection, it is easy to dig the foot of the wall.

Telescopic chassis

- Adopting a telescopic walking frame, it can easily pass through narrow areas.