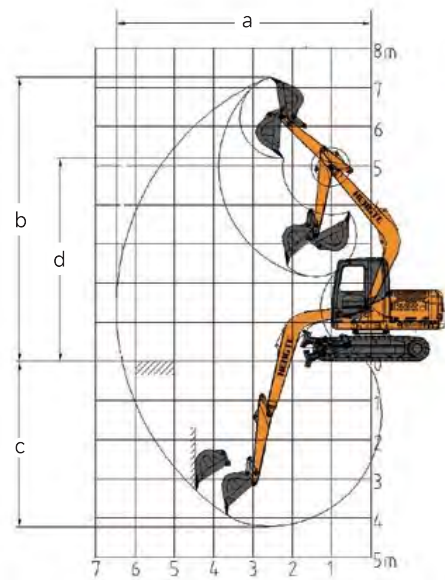
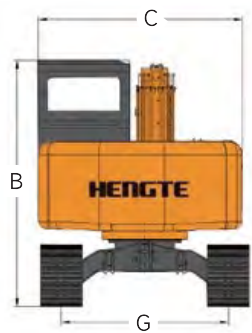
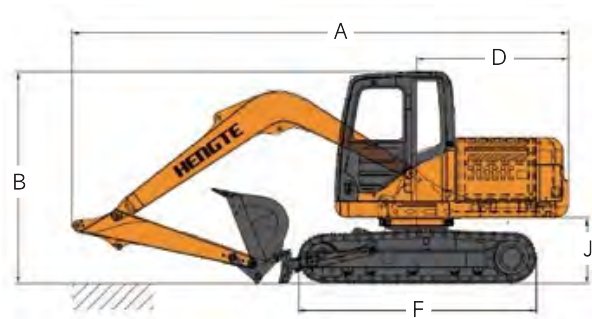


Technical parameters			HT60	
Engine		Scope of work		
Engine model	Yanmar4TNV98-ZCSLKC	Max. excavation radius	6300mm	
Power	46.3KW/2200rpm	Max. unloading height	4200mm	
Weight		Bucket		
Weight of whole machine	6260kg	Bucket capacity	0.23m <sup>3</sup>	

Overall Dimension			HT60	
Describe	Unit	Size		
A. Shipping length	mm	6250		
B. Total height during	mm	2635		
C. Overall width	mm	2180		
D. Tail turning radius	mm	1855		
E. Turntable width	mm	2000		
F. Track length	mm	2600		
G. Track gauge	mm	1560		
H. Number of track shoes * pitch	mm	41*135		
I. track width	mm	400		
J. Ground clearance of counterweight	mm	715		
K. Minimum ground clearance	mm	250		
L. Bulldozer size (width * height)	mm	1960*355		
M. Bulldozer lifting height	mm	310		

Scope of work and excavation force			HT60	
Describe	Unit	Size		
a. Max. excavation radius	mm	6300		
b. Max. excavation height	mm	6000		
c. Max. excavation depth	mm	4050		
d. Max. unloading height	mm	4200		
e. Hydraulic system pressure	Mpa	26		
f. Hydraulic system flow rate	L/min	140		
g. Bucket digging force	Kn	45		
h. Dipper arm digging force	Kn	22		
i. Fuel tank capacity	m <sup>3</sup>	0.23		
j. Rotation speed	r/min	9~10		
k. Driving speed	Km/h	2.3/4.3		



## HT60 CRAWLER EXCAVATOR

### 山东帝盟重工机械有限公司

SHANDONG DIAMOND HEAVY INDUSTRY Co., Ltd

Sales Hotline: 400-106-1996  
Service Hotline: 400-106-0619  
E-mail: ht@ht1996.cn  
International Trade: 86-534-7452888  
Website: www.ht1996.cn  
Address: Shandong Dezhou (Yucheng) National High tech Development Zone Diamond Industrial Park



(Website)



(WeChat)



(Tiktok)

The pictures in this volume are for reference only, and the equipment is subject to the actual object. Shandong DIAMOND Heavy Industry has the right to improve and upgrade the equipment, as well as the final interpretation right.



山东帝盟重工机械有限公司  
SHANDONG DIAMOND HEAVY INDUSTRY Co., Ltd



# Fully Hydraulic Crawler Excavator



# Product Display



## Multiple Accessories To Choose From



## Advantages

<b>Comfortable</b> <ul style="list-style-type: none"><li>● A spacious and comfortable cab provides a wide and all-round view.</li><li>● A new type of suspension seat that conforms to ergonomics, thereby improving the comfort of driver operation.</li></ul>	<b>Intelligence</b> <ul style="list-style-type: none"><li>● Intelligent driving computer is adopted, with big data analysis and storage function and timely warning prompt.</li></ul>
<b>Configure</b> <ul style="list-style-type: none"><li>● The National III standard electronic fuel injection engine adopts newly developed fuel saving technology, with strong power.</li><li>● The original brand's main hydraulic system is perfectly matched with the engine, providing precise flow and improving work efficiency.</li></ul>	<b>Upgrade</b> <ul style="list-style-type: none"><li>● The multiple oil filtration system integrates three filters, making service more convenient.</li><li>● The steel plates in key parts such as the boom and bucket are reinforced to better adapt to harsh working conditions.</li></ul>

The HT60 excavator is a new generation of fully hydraulic tracked excavator independently developed by Emgrand Heavy Industries. It adopts a high-power and low fuel consumption National III standard engine, ensuring the strong power and power reserve of the entire machine; The hydraulic system of the entire machine is matched with imported hydraulic components, which have the characteristics of high reliability, genuine price, safety and environmental protection, comfort and convenience. At the same time, various special configurations can be provided to meet the needs of different countries and customers.