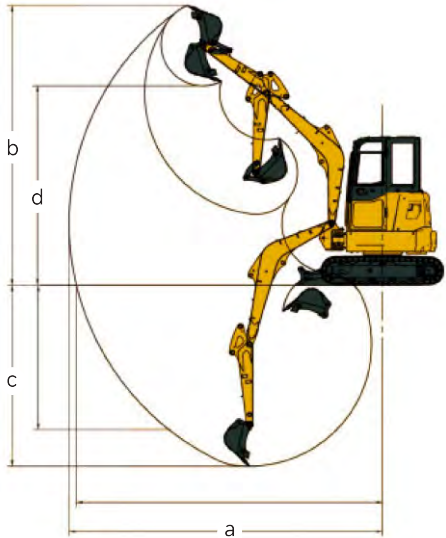
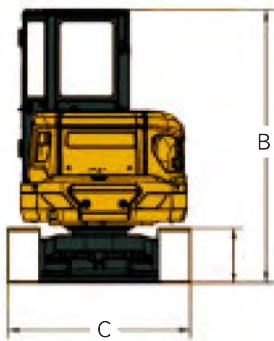
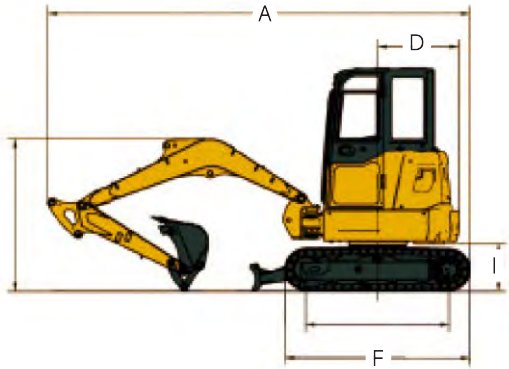


Technical parameters			HT35G	
Engine		Scope of work		
Engine model	YANMAR 3TNV88F-ESSY	Max. excavation radius	5465mm	
Power	18.2KW/2200rpm	Max. unloading height	3460mm	
Weight		Bucket		
Weight of whole machine	3600kg	Bucket capacity	0.12m³	

Overall Dimension			HT35G	
Describe	Unit	Size		
A. Shipping length	mm	4920		
B. Total height during	mm	2550		
C. Overall width	mm	1720		
D. Tail turning radius	mm	860		
E. Turntable width	mm	1550		
F. Track length	mm	2155		
G. Track gauge	mm	1420		
H. track width	mm	300		
I. Ground clearance of counterweight	mm	590		
J. Minimum ground clearance	mm	295		

Scope of work and excavation force			HT35G	
Describe	Unit	Size		
a. Max. excavation radius	mm	5465		
b. Max. excavation height	mm	4855		
c. Max. excavation depth	mm	3105		
d. Max. unloading height	mm	3460		
e. Hydraulic system pressure	Mpa	24.5		
f. Hydraulic system flow rate	L/min	88		
g. Fuel tank capacity	L	50		
h. Hydraulic oil tank capacity	L	40		
i. Bucket digging force	Kn	30.5		
j. Dipper arm digging force	Kn	18.5		
k. Fuel tank capacity	m³	0.12		
l. Driving speed	Km/h	2.4/4.4		



HT35G CRAWLER EXCAVATOR

山东帝盟重工机械有限公司

SHANDONG DIAMOND HEAVY INDUSTRY Co., Ltd

Sales Hotline: 400-106-1996
Service Hotline: 400-106-0619
E-mail: ht@ht1996.cn
International Trade: 86-534-7452888
Website: www.ht1996.cn
Address: Shandong Dezhou (Yucheng) National High tech Development Zone Diamond Industrial Park



(Website)



(WeChat)



(Tiktok)

The pictures in this volume are for reference only, and the equipment is subject to the actual object. Shandong DIAMOND Heavy Industry has the right to improve and upgrade the equipment, as well as the final interpretation right.

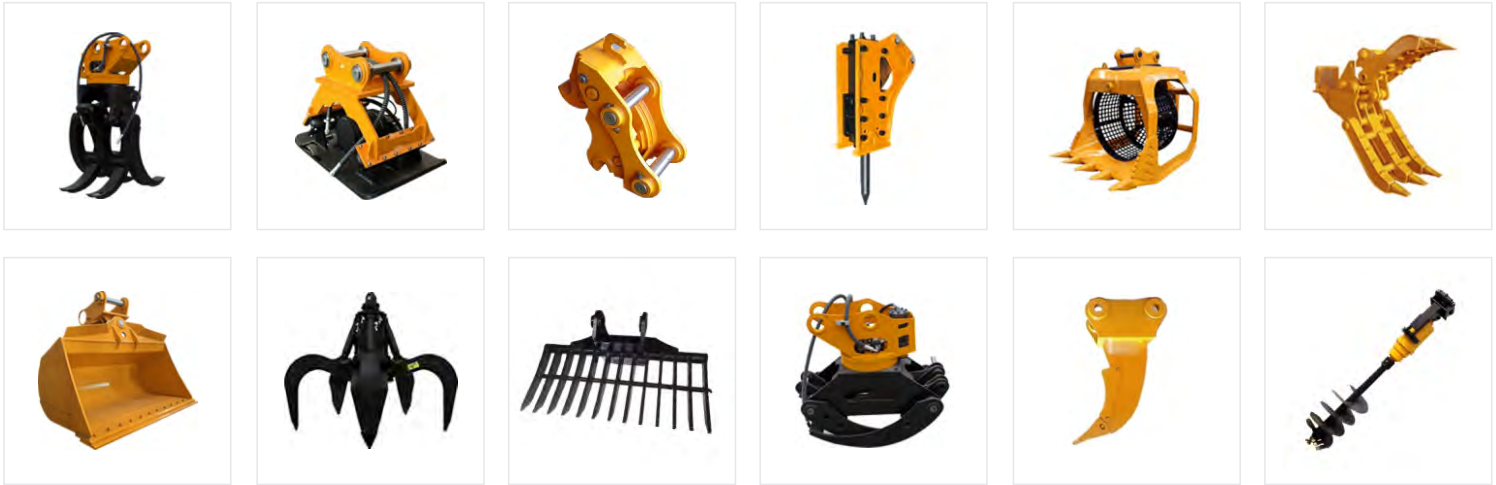
Fully Hydraulic Crawler Excavator



Product Display



Multiple Accessories To Choose From



Advantages

Comfortable

- A spacious and comfortable cab provides a wide and all-round view.
- A new type of suspension seat that conforms to ergonomics, thereby improving the comfort of driver operation.

Configure

- The National III standard electronic fuel injection engine adopts newly developed fuel saving technology, with strong power.
- The original brand's main hydraulic system is perfectly matched with the engine, providing precise flow and improving work efficiency.

Intelligence

- Intelligent driving computer is adopted, with big data analysis and storage function and timely warning prompt.

Upgrade

- The multiple oil filtration system integrates three filters, making service more convenient.
- The steel plates in key parts such as the boom and bucket are reinforced to better adapt to harsh working conditions.

The HT35G excavator is a new generation of fully hydraulic tracked excavator independently developed by Emgrand Heavy Industries. It adopts a high-power and low fuel consumption National III standard engine, ensuring the strong power and power reserve of the entire machine; The hydraulic system of the entire machine is matched with imported hydraulic components, which have the characteristics of high reliability, genuine price, safety and environmental protection, comfort and convenience. At the same time, various special configurations can be provided to meet the needs of different countries and customers.