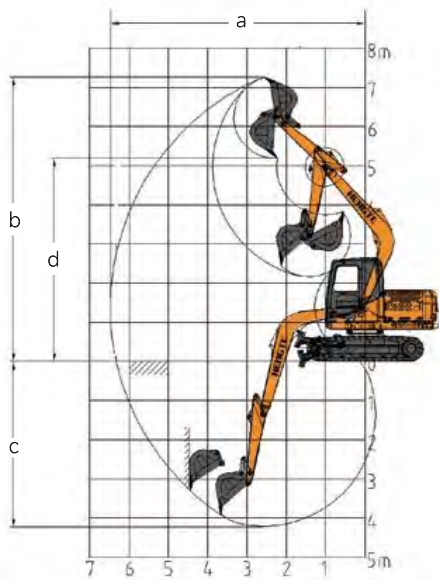
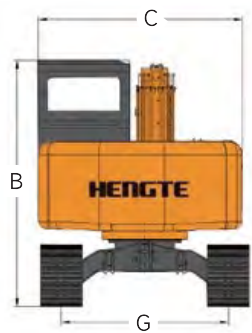
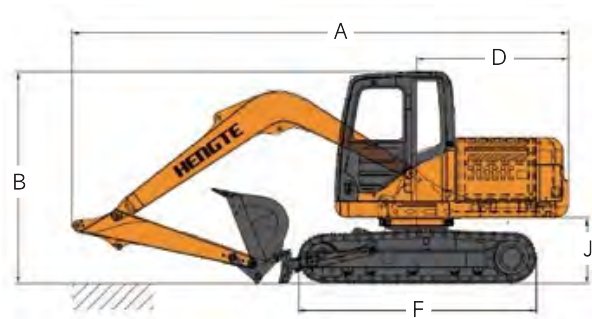


Technical parameters			HT80	
Engine		Scope of work		
Engine model	Yanmar 4TNV98T-ZCSTY	Max. excavation radius	6370mm	
Power	54.3KW/2200rpm	Max. unloading height	5250mm	
Weight		Bucket		
Weight of whole machine	8340kg	Bucket capacity	0.36m³	

Overall Dimension			HT80	
Describe	Unit	Size		
A. Shipping length	mm	6300		
B. Total height during	mm	2700		
C. Overall width	mm	2380		
D. Tail turning radius	mm	1980		
E. Turntable width	mm	2210		
F. Track length	mm	2980		
G. Track gauge	mm	1810		
H. Number of track shoes * pitch	mm	41*154		
I. track width	mm	450		
J. Ground clearance of counterweight	mm	820		
K. Minimum ground clearance	mm	380		
L. Bulldozer size (width * height)	mm	2260*400		
M. Bulldozer lifting height	mm	355		

Scope of work and excavation force			HT80	
Describe	Unit	Size		
a. Max. excavation radius	mm	6370		
b. Max. excavation height	mm	7350		
c. Max. excavation depth	mm	4150		
d. Max. unloading height	mm	5250		
e. Hydraulic system pressure	Mpa	28		
f. Hydraulic system flow rate	L/min	160		
g. Bucket digging force	Kn	55		
h. Dipper arm digging force	Kn	30		
i. Fuel tank capacity	m ³	0.36		
j. Rotation speed	r/min	13~14		
k. Driving speed	Km/h	2.3/4.5		



HT80 CRAWLER EXCAVATOR

山东帝盟重工机械有限公司

SHANDONG DIAMOND HEAVY INDUSTRY Co., Ltd

Sales Hotline: 400-106-1996
Service Hotline: 400-106-0619
E-mail: ht@ht1996.cn
International Trade: 86-534-7452888
Website: www.ht1996.cn
Address: Shandong Dezhou (Yucheng) National High tech Development Zone Diamond Industrial Park



(Website)



(WeChat)



(Tiktok)

The pictures in this volume are for reference only, and the equipment is subject to the actual object. Shandong DIAMOND Heavy Industry has the right to improve and upgrade the equipment, as well as the final interpretation right.



山东帝盟重工机械有限公司
SHANDONG DIAMOND HEAVY INDUSTRY Co., Ltd

Fully Hydraulic Crawler Excavator



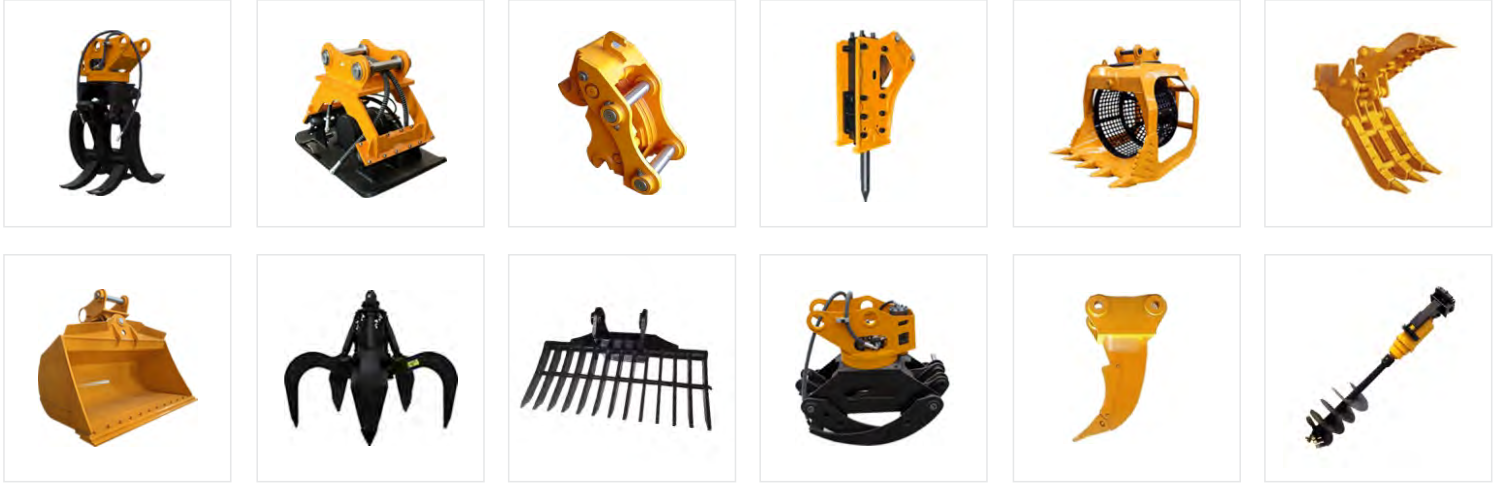
Product Display



Multiple Accessories To Choose From



The HT80 excavator is a new generation of fully hydraulic tracked excavator independently developed by Emgrand Heavy Industries. It adopts a high-power and low fuel consumption National III standard engine, ensuring the strong power and power reserve of the entire machine; The hydraulic system of the entire machine is matched with imported hydraulic components, which have the characteristics of high reliability, genuine price, safety and environmental protection, comfort and convenience. At the same time, various special configurations can be provided to meet the needs of different countries and customers.



Advantages

Comfortable

- A spacious and comfortable cab provides a wide and all-round view.
- A new type of suspension seat that conforms to ergonomics, thereby improving the comfort of driver operation.

Configure

- The National III standard electronic fuel injection engine adopts newly developed fuel saving technology, with strong power.
- The original brand's main hydraulic system is perfectly matched with the engine, providing precise flow and improving work efficiency.

Intelligence

- Intelligent driving computer is adopted, with big data analysis and storage function and timely warning prompt.

Upgrade

- The multiple oil filtration system integrates three filters, making service more convenient.
- The steel plates in key parts such as the boom and bucket are reinforced to better adapt to harsh working conditions.