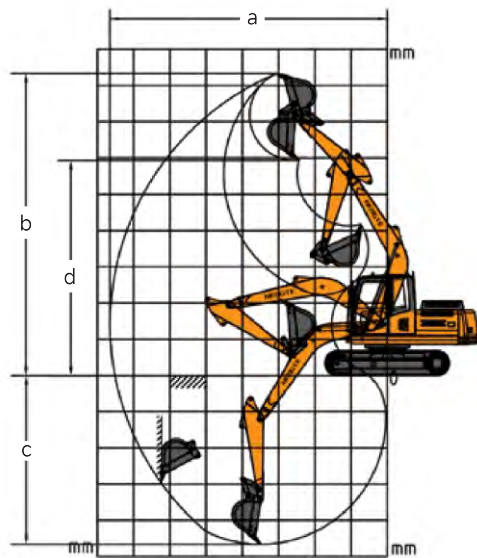
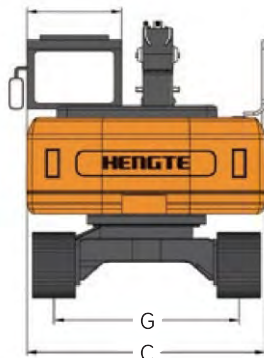
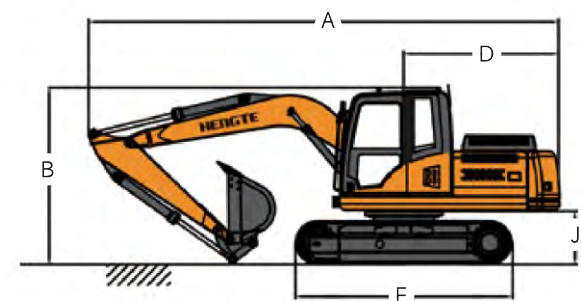


Technical parameters			HT160	
Engine		Cummins QSB3.9-C125-30 93KW/2200rpm	Scope of work	
Engine model			Max. excavation radius	8160mm
Power			Max. unloading height	6150mm
Weight		13540kg	Bucket	
Weight of whole machine			Bucket capacity	0.60m³

Overall Dimension			HT160	
Describe	Unit	Size		
A. Shipping length	mm	7800		
B. Total height during	mm	2900		
C. Overall width	mm	2500		
D. Tail turning radius	mm	2400		
E. Turntable width	mm	2490		
F. Track length	mm	3470		
G. Track gauge	mm	1960		
H. Number of track shoes * pitch	mm	42*175		
I. track width	mm	500		
J. Ground clearance of counterweight	mm	880		
K. Minimum ground clearance	mm	420		

Scope of work and excavation force			HT160	
Describe	Unit	Size		
a. Max. excavation radius	mm	8160		
b. Max. excavation height	mm	8650		
c. Max. excavation depth	mm	5300		
d. Max. unloading height	mm	6150		
e. Hydraulic system pressure	Mpa	32		
f. Hydraulic system flow rate	L/min	2*126		
g. Bucket digging force	Kn	85		
h. Dipper arm digging force	Kn	53		
i. Fuel tank capacity	m³	0.60		
j. Rotation speed	r/min	13~14		
k. Driving speed	Km/h	2/4		



HT160 CRAWLER EXCAVATOR

山东帝盟重工机械有限公司

SHANDONG DIAMOND HEAVY INDUSTRY Co., Ltd

Sales Hotline: 400-106-1996
Service Hotline: 400-106-0619
E-mail: ht@ht1996.cn
International Trade: 86-534-7452888
Website: www.ht1996.cn
Address: Shandong Dezhou (Yucheng) National High tech Development Zone Diamond Industrial Park



(Website)



(WeChat)



(Tiktok)

The pictures in this volume are for reference only, and the equipment is subject to the actual object. Shandong DIAMOND Heavy Industry has the right to improve and upgrade the equipment, as well as the final interpretation right.



山东帝盟重工机械有限公司
SHANDONG DIAMOND HEAVY INDUSTRY Co., Ltd

Fully Hydraulic Crawler Excavator



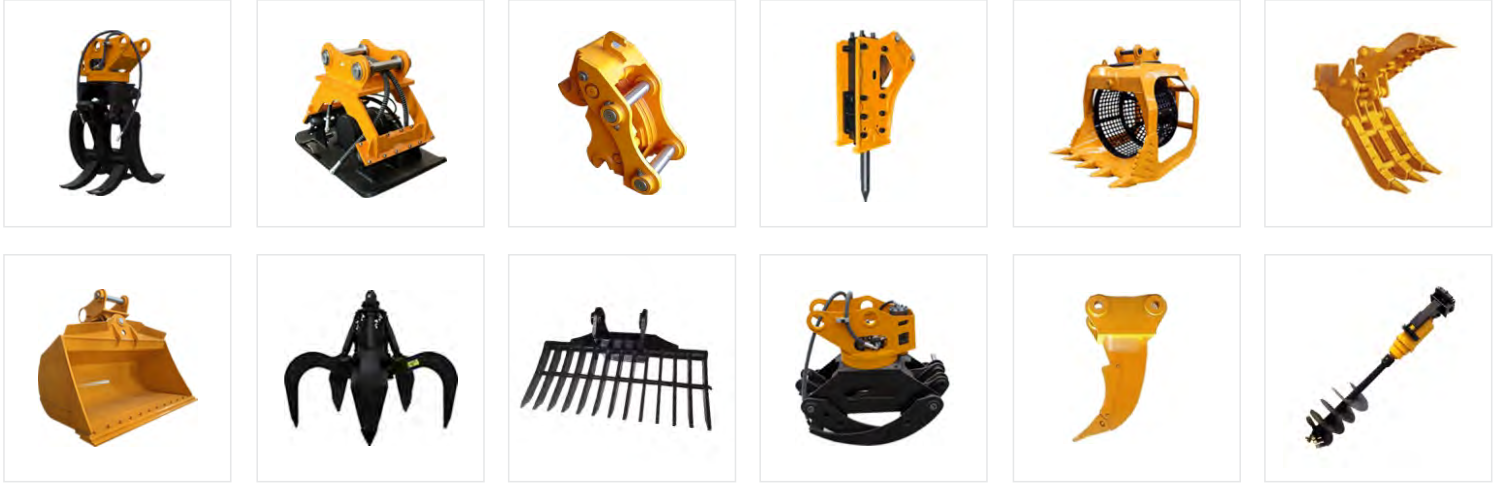
Product Display



Multiple Accessories To Choose From



The HT160 excavator is a new generation of fully hydraulic tracked excavator independently developed by Emgrand Heavy Industries. It adopts a high-power and low fuel consumption National III standard engine, ensuring the strong power and power reserve of the entire machine; The hydraulic system of the entire machine is matched with imported hydraulic components, which have the characteristics of high reliability, genuine price, safety and environmental protection, comfort and convenience. At the same time, various special configurations can be provided to meet the needs of different countries and customers.



Advantages

- ### Comfortable

 - A spacious and comfortable cab provides a wide and all-round view.
 - A new type of suspension seat that conforms to ergonomics, thereby improving the comfort of driver operation.
- ### Intelligence

 - Intelligent driving computer is adopted, with big data analysis and storage function and timely warning prompt.
- ### Configure

 - The National III standard electronic fuel injection engine adopts newly developed fuel saving technology, with strong power.
 - The original brand's main hydraulic system is perfectly matched with the engine, providing precise flow and improving work efficiency.
- ### Upgrade

 - The multiple oil filtration system integrates three filters, making service more convenient.
 - The steel plates in key parts such as the boom and bucket are reinforced to better adapt to harsh working conditions.