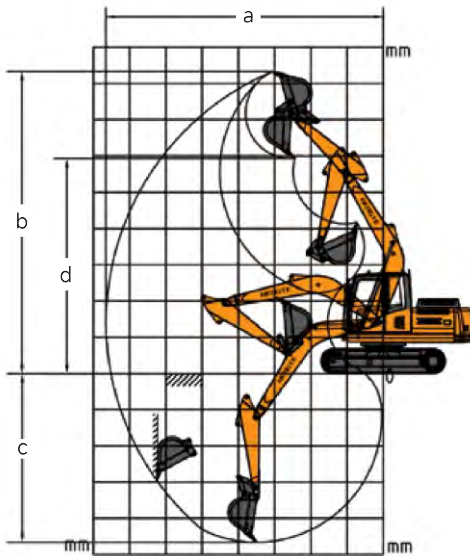
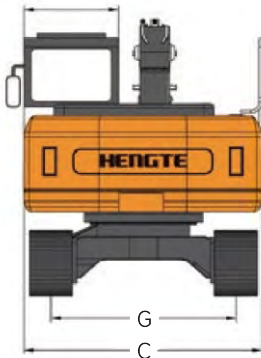
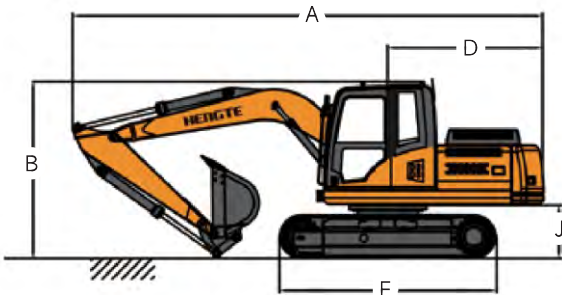


Technical parameters			HT230	
Engine		Scope of work		
Engine model	Cummins QSB5.9-C180-II	Max. excavation radius	10000mm	
Power	132KW/2200rpm	Max. unloading height	7585mm	
Weight		Bucket		
Weight of whole machine	23200kg	Bucket capacity	1.0m ³	

Overall Dimension			HT230	
Describe	Unit	Size		
A. Shipping length	mm	9520		
B. Total height during	mm	3050		
C. Overall width	mm	2990		
D. Tail turning radius	mm	2750		
E. Turntable width	mm	2500		
F. Track length	mm	4250		
G. Track gauge	mm	2400		
I. track width	mm	600		
J. Ground clearance of counterweight	mm	1100		
K. Minimum ground clearance	mm	440		

Scope of work and excavation force			HT230	
Describe	Unit	Size		
a. Max. excavation radius	mm	10000		
b. Max. excavation height	mm	9620		
c. Max. excavation depth	mm	6585		
d. Max. unloading height	mm	7585		
e. Hydraulic system pressure	Mpa	32		
f. Hydraulic system flow rate	L/min	2*224		
g. Bucket digging force	Kn	150		
h. Dipper arm digging force	Kn	105		
i. Fuel tank capacity	m ³	1.0		
j. Rotation speed	r/min	10		
k. Driving speed	Km/h	2/4		



HT230 CRAWLER EXCAVATOR

山东帝盟重工机械有限公司

SHANDONG DIAMOND HEAVY INDUSTRY Co., Ltd

Sales Hotline: 400-106-1996
Service Hotline: 400-106-0619
E-mail: ht@ht1996.cn
International Trade: 86-534-7452888
Website: www.ht1996.cn
Address: Shandong Dezhou (Yucheng) National High tech Development Zone Diamond Industrial Park



(Website)



(WeChat)



(Tiktok)

The pictures in this volume are for reference only, and the equipment is subject to the actual object. Shandong DIAMOND Heavy Industry has the right to improve and upgrade the equipment, as well as the final interpretation right.



山东帝盟重工机械有限公司
SHANDONG DIAMOND HEAVY INDUSTRY Co., Ltd

Fully Hydraulic Crawler Excavator



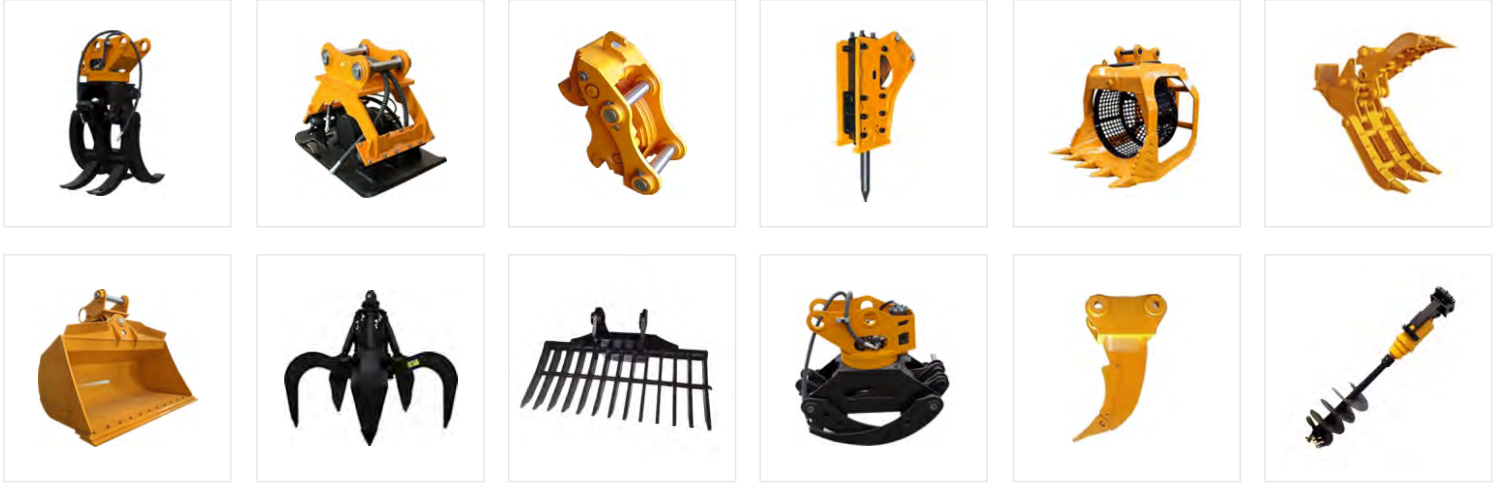
Product Display



Multiple Accessories To Choose From



The HT230 excavator is a new generation of fully hydraulic tracked excavator independently developed by Emgrand Heavy Industries. It adopts a high-power and low fuel consumption National III standard engine, ensuring the strong power and power reserve of the entire machine; The hydraulic system of the entire machine is matched with imported hydraulic components, which have the characteristics of high reliability, genuine price, safety and environmental protection, comfort and convenience. At the same time, various special configurations can be provided to meet the needs of different countries and customers.



Advantages

- Comfortable

 - A spacious and comfortable cab provides a wide and all-round view.
 - A new type of suspension seat that conforms to ergonomics, thereby improving the comfort of driver operation.
- Intelligence

 - Intelligent driving computer is adopted, with big data analysis and storage function and timely warning prompt.
- Configure

 - The National III standard electronic fuel injection engine adopts newly developed fuel saving technology, with strong power.
 - The original brand's main hydraulic system is perfectly matched with the engine, providing precise flow and improving work efficiency.
- Upgrade

 - The multiple oil filtration system integrates three filters, making service more convenient.
 - The steel plates in key parts such as the boom and bucket are reinforced to better adapt to harsh working conditions.