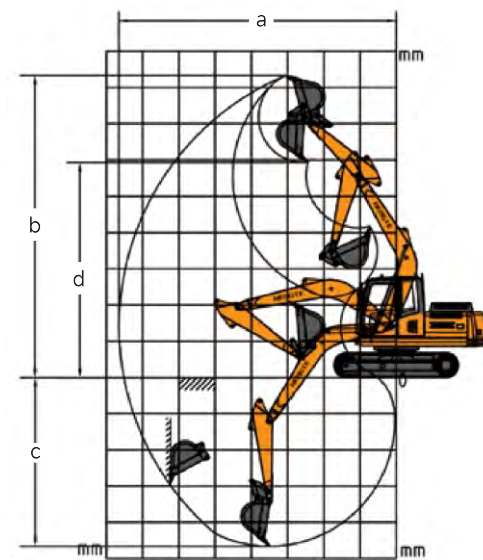
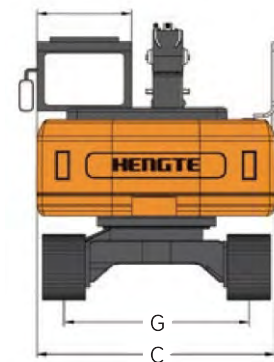
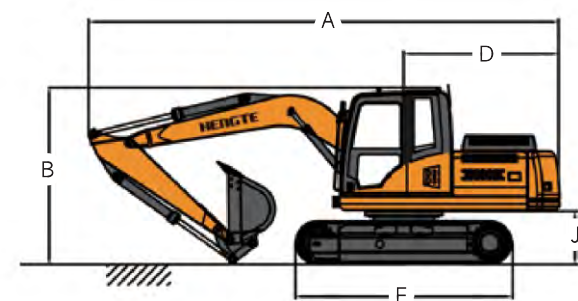


Technical parameters			HT260	
Engine		Scope of work		
Engine model	ISUZU 4HK1-XDHAG-01-C3		Max. excavation radius	10200mm
Power	140KW/2000rpm		Max. unloading height	6590mm
Weight		Bucket		
Weight of whole machine	25600kg		Bucket capacity	1.20m ³

Overall Dimension			HT260	
Describe	Unit	Size		
A. Shipping length	mm	10280		
B. Total height during	mm	3255		
C. Overall width	mm	3290		
D. Tail turning radius	mm	2750		
E. Turntable width	mm	2720		
F. Track length	mm	4660		
G. Track gauge	mm	2590		
I. track width	mm	600		
J. Ground clearance of counterweight	mm	1150		
K. Minimum ground clearance	mm	465		

Scope of work and excavation force			HT260	
Describe	Unit	Size		
a. Max. excavation radius	mm	10200		
b. Max. excavation height	mm	9300		
c. Max. excavation depth	mm	6350		
d. Max. unloading height	mm	6590		
e. Hydraulic system pressure	Mpa	32		
f. Hydraulic system flow rate	L/min	2*246		
g. Bucket digging force	Kn	175		
h. Dipper arm digging force	Kn	125		
i. Fuel tank capacity	m ³	1.20		
j. Rotation speed	r/min	9		
k. Driving speed	Km/h	2/4		



HT260 CRAWLER EXCAVATOR

山东帝盟重工机械有限公司

SHANDONG DIAMOND HEAVY INDUSTRY Co., Ltd

Sales Hotline: 400-106-1996
Service Hotline: 400-106-0619
E-mail: ht@ht1996.cn
International Trade: 86-534-7452888
Website: www.ht1996.cn
Address: Shandong Dezhou (Yucheng) National High tech Development Zone Diamond Industrial Park



(Website)



(WeChat)



(Tiktok)

The pictures in this volume are for reference only, and the equipment is subject to the actual object. Shandong DIAMOND Heavy Industry has the right to improve and upgrade the equipment, as well as the final interpretation right.



山东帝盟重工机械有限公司
SHANDONG DIAMOND HEAVY INDUSTRY Co., Ltd

Fully Hydraulic Crawler Excavator



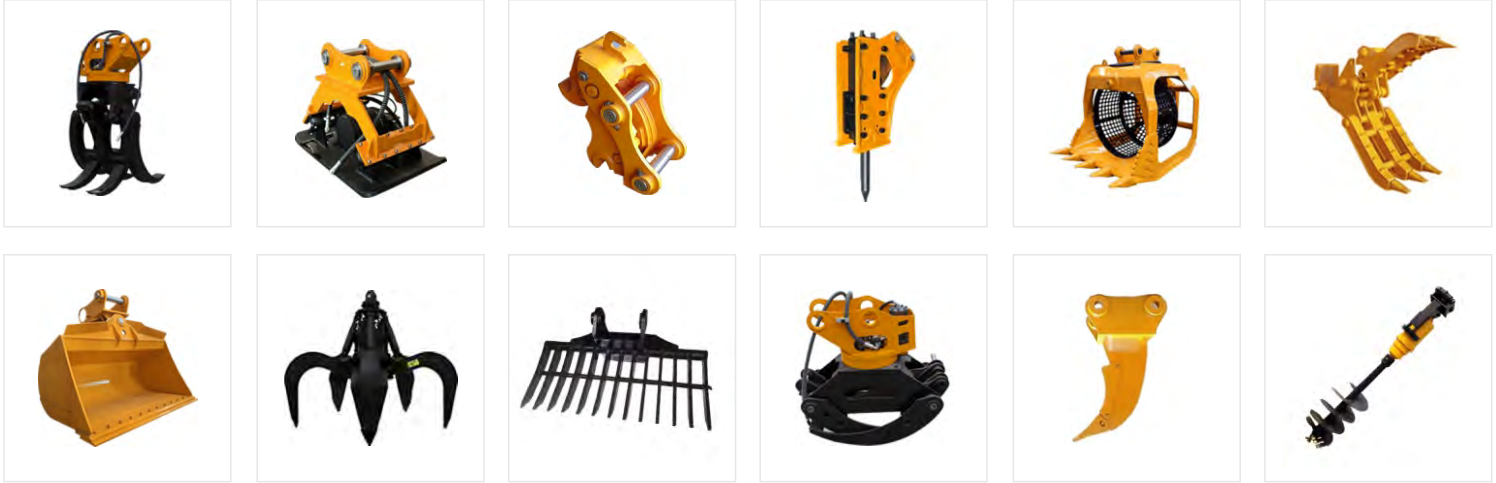
Product Display



Multiple Accessories To Choose From



The HT260 excavator is a new generation of fully hydraulic tracked excavator independently developed by Emgrand Heavy Industries. It adopts a high-power and low fuel consumption National III standard engine, ensuring the strong power and power reserve of the entire machine; The hydraulic system of the entire machine is matched with imported hydraulic components, which have the characteristics of high reliability, genuine price, safety and environmental protection, comfort and convenience. At the same time, various special configurations can be provided to meet the needs of different countries and customers.



Advantages

<div>Comfortable</div> <div><ul style="list-style-type: none">A spacious and comfortable cab provides a wide and all-round view.A new type of suspension seat that conforms to ergonomics, thereby improving the comfort of driver operation.</div>	<div>Intelligence</div> <div><ul style="list-style-type: none">Intelligent driving computer is adopted, with big data analysis and storage function and timely warning prompt.</div>
<div>Configure</div> <div><ul style="list-style-type: none">The National III standard electronic fuel injection engine adopts newly developed fuel saving technology, with strong power.The original brand's main hydraulic system is perfectly matched with the engine, providing precise flow and improving work efficiency.</div>	<div>Upgrade</div> <div><ul style="list-style-type: none">The multiple oil filtration system integrates three filters, making service more convenient.The steel plates in key parts such as the boom and bucket are reinforced to better adapt to harsh working conditions.</div>