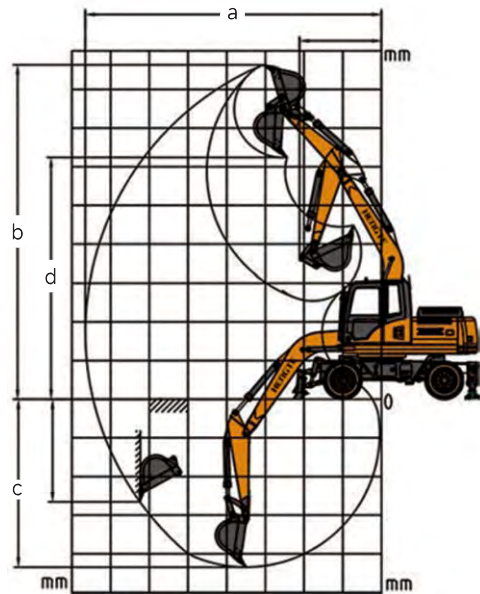
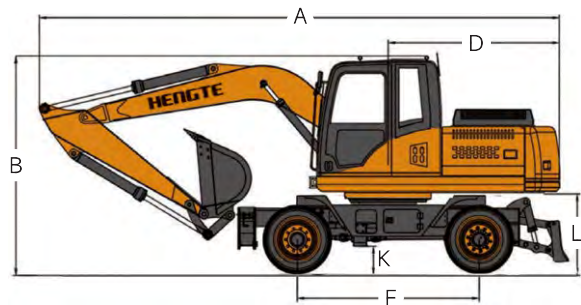


Technical Parameters		HT190W	
Engine		Working Range	
Engine Type	Cummins 6BTA5.9-C180-II	Max. Digging Radius	9100mm
Power	132KW/2200rpm	Max. Unloading Height	6700mm
Weight		Bucket	
Overall Weight	18800kg	Bucket Capacity	1.0m³

Overall Dimension			HT190W
Describe	Unit	Size	
A. Shipping Length	mm	9200	
B. Total Height During	mm	3300	
C. Overall Width	mm	2490	
D. Tail Turning Radius	mm	2750	
E. Track Width	mm	1975	
F. Wheelbase	mm	2855	
G. Boom Length	mm	5200	
H. Stick Length	mm	2600	
I. Bulldozer Size	mm	2500*640	
J. Bulldozer Lifting/Support Height	mm	430/80	
K. Minimum Ground Clearance	mm	320	
L. Ground Clearance of Counterweight	mm	1210	

Working Range and Digging Force			HT190W
Describe	Unit	Size	
a. Maximum Digging Radius	mm	9100	
b. Maximum Digging Height	mm	9800	
c. Maximum Digging Depth	mm	5700	
d. Maximum Unloading Height	mm	6700	
e. Minimum Turning Radius	mm	2750	
f. Bucket Capacity	m³	1.0	
g. Hydraulic System Pressure	Mpa	32	
h. Hydraulic System Flow Rate	L/min	2*239	
i. Bucket Digging Force	Kn	142	
j. Stick Digging Force	Kn	110	
k. Fuel Tank Capacity	L	350	
l. Hydraulic Oil Tank Capacity	L	215	
m. Gradient	%	≥60	
n. Rotation Speed	r/min	11	
o. Travel Speed	Km/h	30	
p. Braking Method	Four Wheel Oil Brake		
q. Shift Mode	Fully Hydraulic Automatic Transmission		



HENGTE



HT190W WHEEL EXCAVATOR

山东帝盟重工机械有限公司  
SHANDONG DIAMOND HEAVY INDUSTRY Co., Ltd

Telephone: 400-106-1996  
E-mail: dm@sddmzg.com  
International Trade: 86-534-7452888  
Website: www.sddmzg.com  
Address: Shandong Dezhou (Yucheng) National High tech Development Zone Diamond Industrial Park



(Website)



(WeChat)



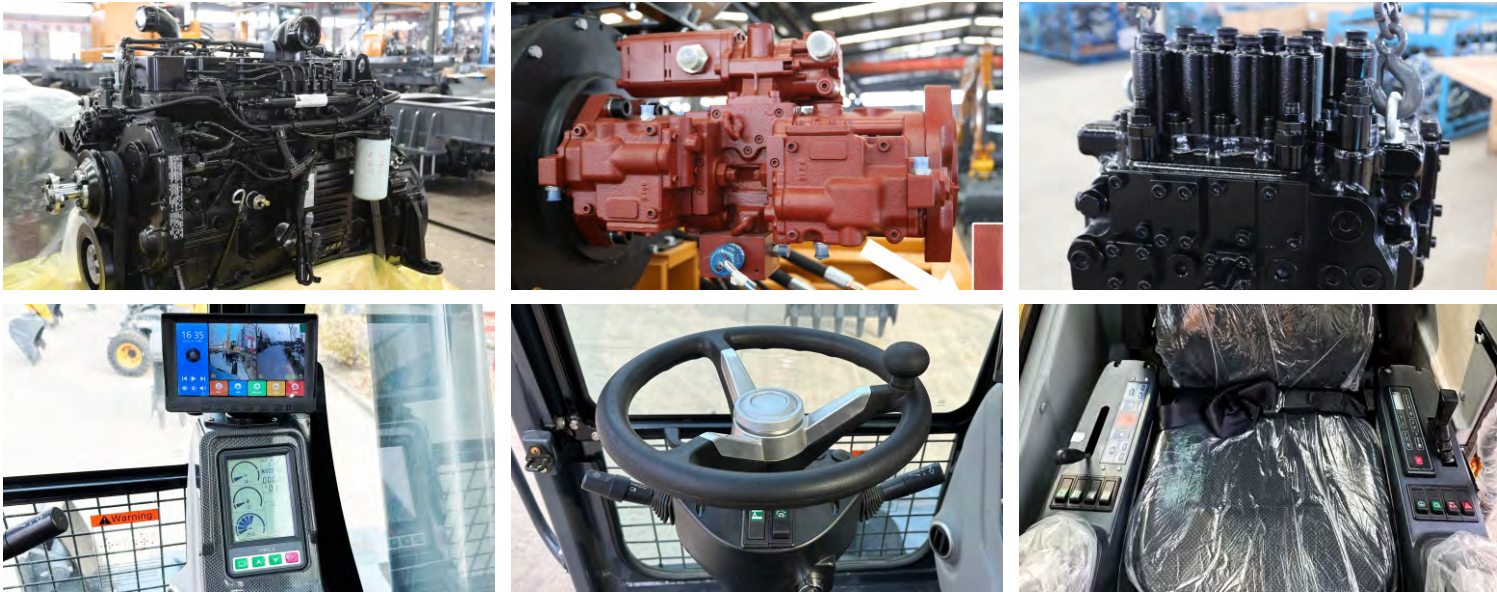
(Tiktok)

The pictures in this volume are for reference only, and the equipment is subject to the actual object. Shandong DIAMOND Heavy Industry has the right to improve and upgrade the equipment, as well as the final interpretation right.

山东帝盟重工机械有限公司  
SHANDONG DIAMOND HEAVY INDUSTRY Co., Ltd

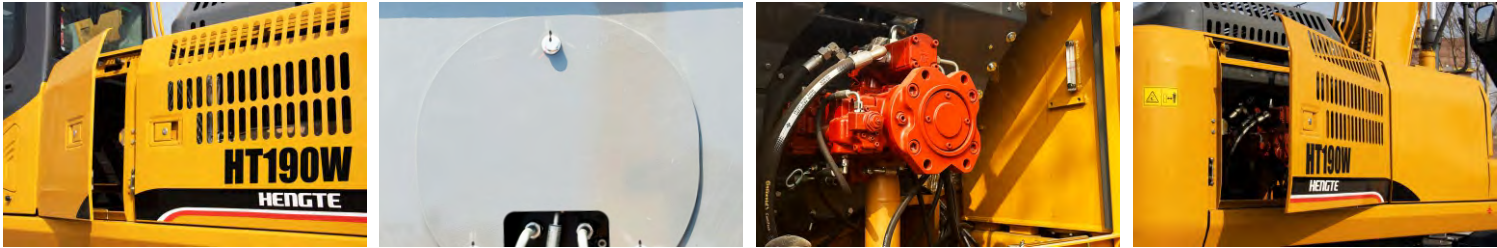


# Fully Hydraulic Wheeled Excavator



The HT190W excavator is a new generation fully hydraulic wheeled excavator independently developed by DIAMOND Heavy Industries, which meets the National II emission standards and adopts a high-power and low fuel consumption standard electronic injection engine, ensuring the strong power and power reserve of the entire machine; The precise matching between the efficient hydraulic system and the bridge box ensures the arbitrary switching between working and walking states; The hydraulic system of the entire machine is matched with a load sensitive system, which has the characteristics of "coordinated action, high reliability, safety and environmental protection, comfort and convenience". At the same time, customized configurations can be provided according to customer needs, which can adapt to the needs of different countries and customers.

## Convenient Maintenance: Open Panel Design



# Product Display



## Multiple Accessories To Choose From



## Advantages

- ### Comfortable

  - A spacious and comfortable cab provides a wide and all-round view.
  - A new type of suspension seat that conforms to ergonomics, thereby improving the comfort of driver operation.
- ### Intelligence

  - Intelligent driving computer is adopted, with big data analysis and storage function and timely warning prompt.
- ### Configure

  - The National II standard electronic fuel injection engine adopts newly developed fuel saving technology, with strong power.
  - The original brand's main hydraulic system is perfectly matched with the engine, providing precise flow and improving work efficiency.
- ### Energy

  - Full time four-wheel drive, equipped with high and low gears, with high-speed walking ability, able to achieve fast transitions.
  - High driving power enables the vehicle to have flexible off-road capabilities, ensuring strong off-road performance.