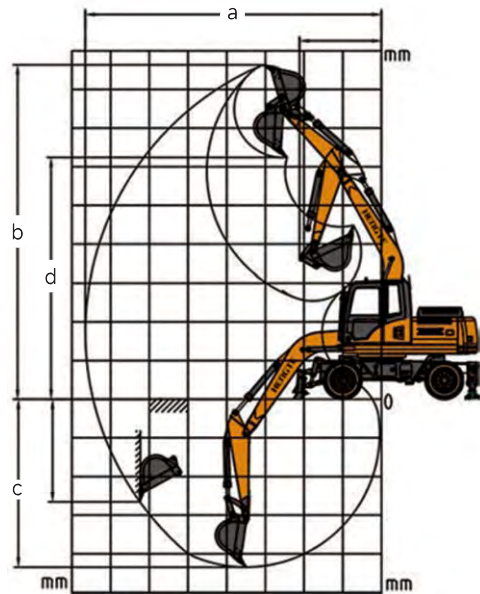
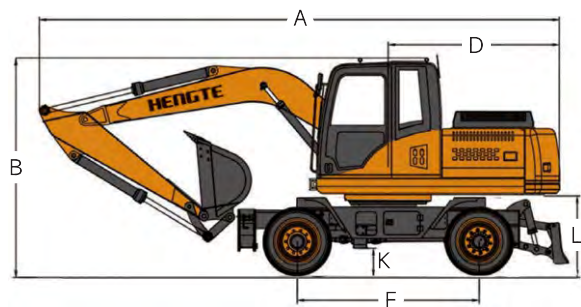


Technical Parameters			HT175W	
Engine		Working Range		
Engine Type	Cummins 6BTA5.9-C180-II	Max. Digging Radius	8550mm	
Power	132KW/2200rpm	Max. Unloading Height	6600mm	
Weight		Bucket		
Overall Weight	16100kg	Bucket Capacity	0.70m³	

Overall Dimension			HT175W
Describe	Unit	Size	
A. Shipping Length	mm	8400	
B. Total Height During Transportation	mm	3255	
C. Overall Width	mm	2580	
D. Tail Turning Radius	mm	2395	
E. Track Width	mm	1900	
F. Wheelbase	mm	2645	
G. Boom Length	mm	5100	
H. Stick Length	mm	2500	
I. Bulldozer Size	mm	2500*640	
J. Bulldozer Lifting/Support Height	mm	450/110	
K. Minimum Ground Clearance	mm	320	
L. Ground Clearance of Counterweight	mm	1200	

Working Range and Digging Force		HT175W
Describe	Unit	Size
a . Maximum Digging Radius	mm	8550
b . Maximum Digging Height	mm	9022
c . Maximum Digging Depth	mm	5045
d . Maximum Unloading Height	mm	6600
e . Minimum Turning Radius	mm	2395
f . Bucket Capacity	m³	0.70
g . Hydraulic System Pressure	Mpa	32
h . Hydraulic System Flow Rate	L/min	2*160
i . Bucket Digging Force	Kn	92.2
j . Stick Digging Force	Kn	59.7
k . Fuel Tank Capacity	L	220
l . Hydraulic Oil Tank Capacity	L	180
m. Gradient	%	≥60
n . Rotation Speed	r/min	13~14
o . Travel Speed	Km/h	30
p . Braking Method	Four Wheel Oil Brake	
q . Shift Mode	Fully Hydraulic Automatic Transmission	



HENGTE



HT175W WHEEL EXCAVATOR

山东帝盟重工机械有限公司
SHANDONG DIAMOND HEAVY INDUSTRY Co., Ltd

Telephone: 400-106-1996
E-mail: dm@sddmzg.com
International Trade: 86-534-7452888
Website: www.sddmzg.com
Address: Shandong Dezhou (Yucheng) National High tech Development Zone Diamond Industrial Park



(Website)



(WeChat)



(Tiktok)

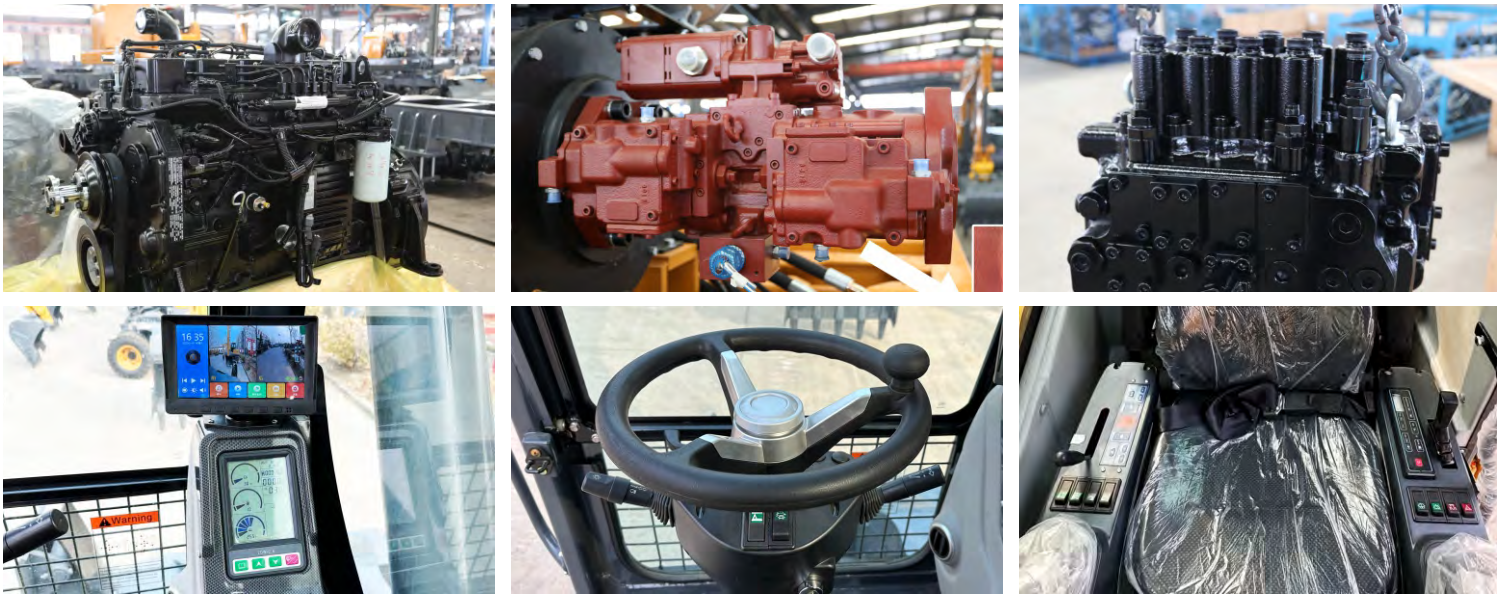
The pictures in this volume are for reference only, and the equipment is subject to the actual object. Shandong DIAMOND Heavy Industry has the right to improve and upgrade the equipment, as well as the final interpretation right.

山东帝盟重工机械有限公司
SHANDONG DIAMOND HEAVY INDUSTRY Co., Ltd

Fully Hydraulic Wheeled Excavator

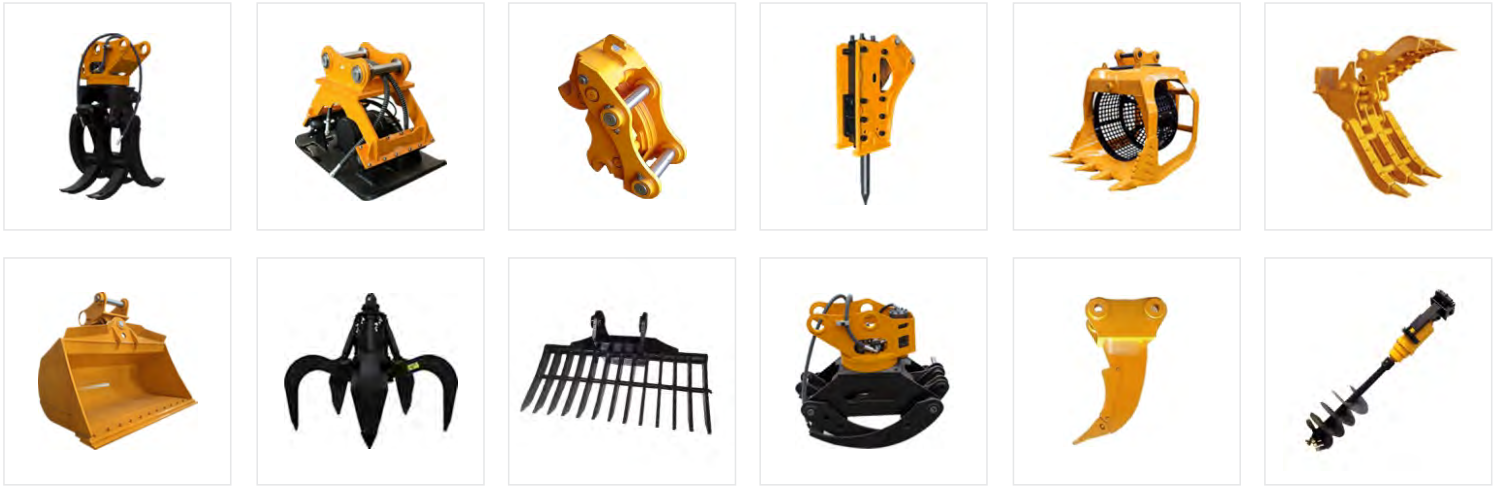


Product Display



The HT175W excavator is a new generation fully hydraulic wheeled excavator independently developed by DIAMOND Heavy Industries, which meets the National II emission standards and adopts a high-power and low fuel consumption standard electronic injection engine, ensuring the strong power and power reserve of the entire machine; The precise matching between the efficient hydraulic system and the bridge box ensures the arbitrary switching between working and walking states; The hydraulic system of the entire machine is matched with a load sensitive system, which has the characteristics of "coordinated action, high reliability, safety and environmental protection, comfort and convenience". At the same time, customized configurations can be provided according to customer needs, which can adapt to the needs of different countries and customers.

Multiple Accessories To Choose From



Advantages

Comfortable

- A spacious and comfortable cab provides a wide and all-round view.
- A new type of suspension seat that conforms to ergonomics, thereby improving the comfort of driver operation.

Configure

- The National II standard electronic fuel injection engine adopts newly developed fuel saving technology, with strong power.
- The original brand's main hydraulic system is perfectly matched with the engine, providing precise flow and improving work efficiency.

Intelligence

- Intelligent driving computer is adopted, with big data analysis and storage function and timely warning prompt.

Energy

- Full time four-wheel drive, equipped with high and low gears, with high-speed walking ability, able to achieve fast transitions.
- High driving power enables the vehicle to have flexible off-road capabilities, ensuring strong off-road performance.

Convenient Maintenance: Open Panel Design

