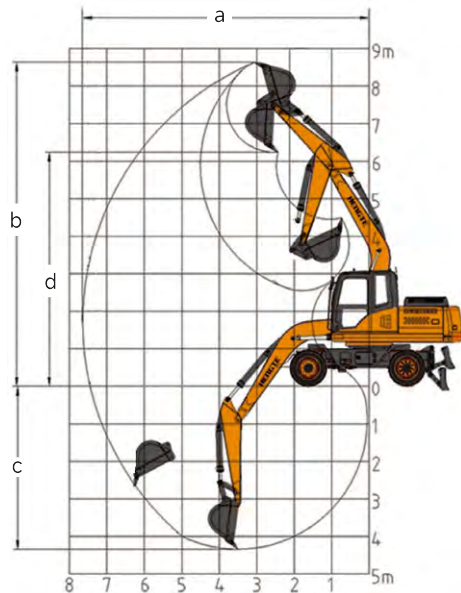
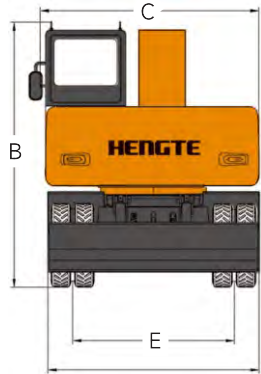
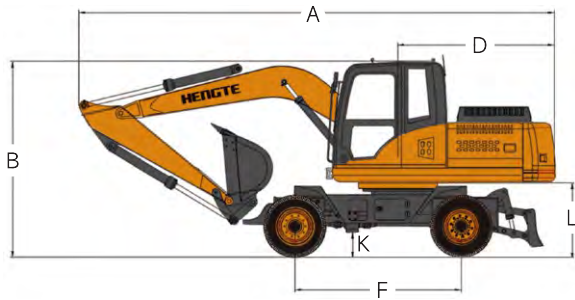


Technical Parameters				HT150W	
Engine			Working Range		
Engine Type		Cummins QSB3.9-C125	Max. Digging Radius		8060mm
Power		93KW/2200rpm	Max. Unloading Height		6300mm
Weight			Bucket		
Overall Weight		13400kg	Bucket Capacity		0.60m³

Overall Dimension			HT150W
Describe	Unit	Size	
A. Shipping Length	mm	7900	
B. Total Height During Transportation	mm	3255	
C. Overall Width	mm	2580	
D. Tail Turning Radius	mm	2395	
E. Track Width	mm	1900	
F. Wheelbase	mm	2600	
G. Boom Length	mm	4600	
H. Stick Length	mm	2200	
I. Bulldozer Size	mm	2500*640	
J. Bulldozer Lifting/Support Height	mm	450/110	
K. Minimum Ground Clearance	mm	320	
L. Ground Clearance of Counterweight	mm	1200	

Working Range and Digging Force		HT150W
Describe	Unit	Size
a . Maximum Digging Radius	mm	8060
b . Maximum Digging Height	mm	8700
c . Maximum Digging Depth	mm	4865
d . Maximum Unloading Height	mm	6300
e . Minimum Turning Radius	mm	2395
f . Bucket Capacity	m³	0.60
g . Hydraulic System Pressure	Mpa	32
h . Hydraulic System Flow Rate	L/min	2*130
i . Bucket Digging Force	Kn	85
j . Stick Digging Force	Kn	53
k . Fuel Tank Capacity	L	220
l . Hydraulic Oil Tank Capacity	L	180
m. Gradient	%	≥60
n . Rotation Speed	r/min	13-14
o . Travel Speed	Km/h	30
p . Braking Method	Four Wheel Oil Brake	
q . Shift Mode	Fully Hydraulic Automatic Transmission	



HENGTE



HT150W WHEEL EXCAVATOR

山东帝盟重工机械有限公司  
SHANDONG DIAMOND HEAVY INDUSTRY Co., Ltd

Telephone: 400-106-1996  
E-mail: dm@sddmzg.com  
International Trade: 86-534-7452888  
Website: www.sddmzg.com  
Address: Shandong Dezhou (Yucheng) National High tech Development Zone Diamond Industrial Park



(Website)



(WeChat)



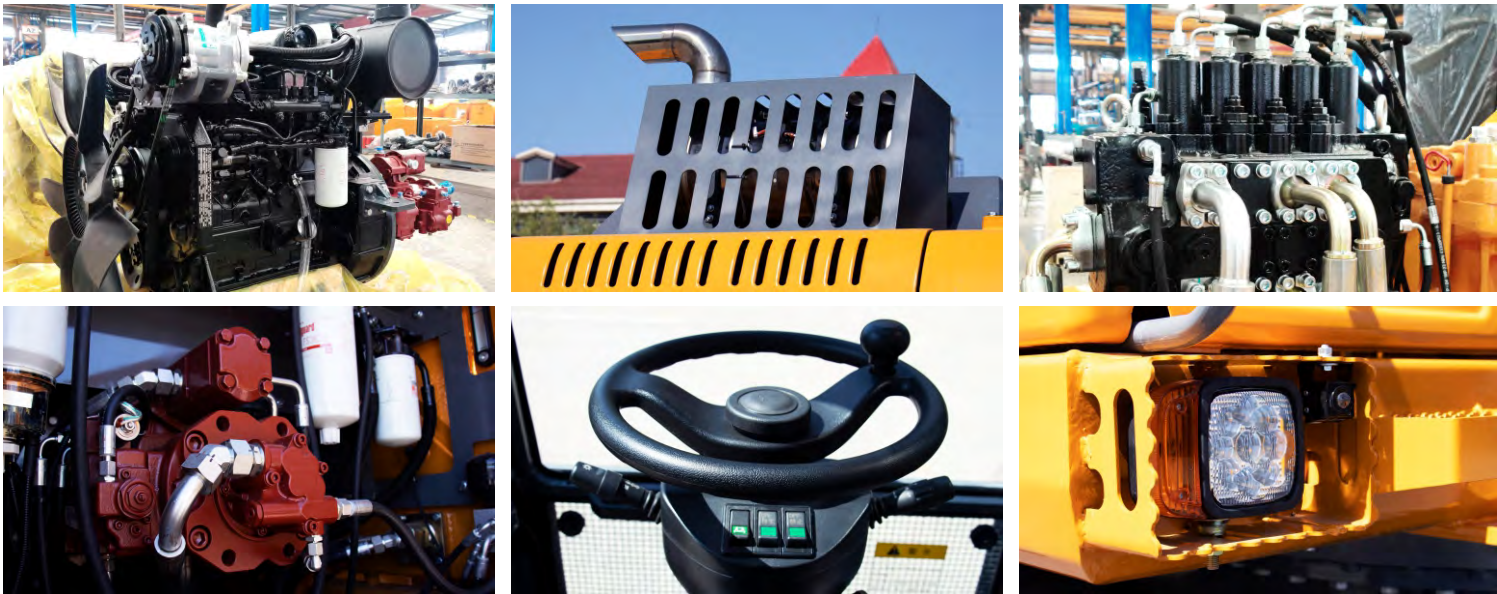
(Tiktok)

The pictures in this volume are for reference only, and the equipment is subject to the actual object. Shandong DIAMOND Heavy Industry has the right to improve and upgrade the equipment, as well as the final interpretation right.

山东帝盟重工机械有限公司  
SHANDONG DIAMOND HEAVY INDUSTRY Co., Ltd

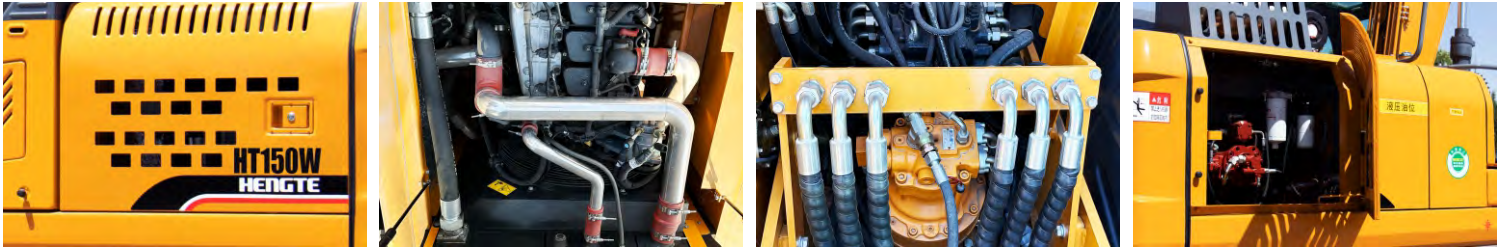


# Fully Hydraulic Wheeled Excavator



The HT150W plus excavator is a new generation fully hydraulic wheeled excavator independently developed by DIAMOND Heavy Industries, which meets the National III emission standards and adopts a high-power and low fuel consumption standard electronic injection engine, ensuring the strong power and power reserve of the entire machine; The precise matching between the efficient hydraulic system and the bridge box ensures the arbitrary switching between working and walking states; The hydraulic system of the entire machine is matched with a load sensitive system, which has the characteristics of "coordinated action, high reliability, safety and environmental protection, comfort and convenience". At the same time, customized configurations can be provided according to customer needs, which can adapt to the needs of different countries and customers.

## Convenient Maintenance: Open Panel Design



# Product Display



## Multiple Accessories To Choose From



## Advantages

- ### Comfortable

  - A spacious and comfortable cab provides a wide and all-round view.
  - A new type of suspension seat that conforms to ergonomics, thereby improving the comfort of driver operation.
- ### Intelligence

  - Intelligent driving computer is adopted, with big data analysis and storage function and timely warning prompt.
- ### Configure

  - The National III standard electronic fuel injection engine adopts newly developed fuel saving technology, with strong power.
  - The original brand's main hydraulic system is perfectly matched with the engine, providing precise flow and improving work efficiency.
- ### Energy

  - Full time four-wheel drive, equipped with high and low gears, with high-speed walking ability, able to achieve fast transitions.
  - High driving power enables the vehicle to have flexible off-road capabilities, ensuring strong off-road performance.