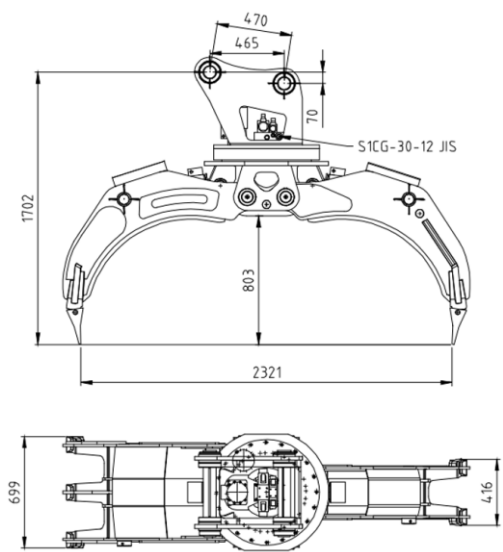
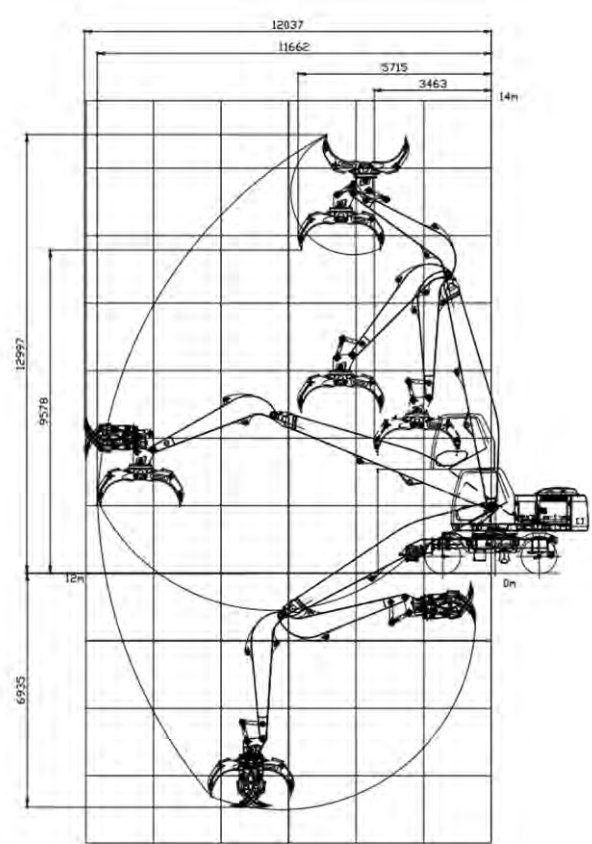


Technical Parameters			HT215K	
Engine		Working Range		
Engine Type	Cummins 6BTA5.9-C180-II	Max. Grabbing Radius	12037mm	
Power	132KW/2200rpm	Max. Unloading Height	9578mm	
Weight		Grabbing Weight		
Overall Weight	25000kg	Max. Grabbing Weight	2100kg	

Overall Dimension			HT215K	
Describe	Unit	Size		
A. Shipping Length	mm	10050		
B. Total Height During Transportation	mm	3300		
C. Overall Width	mm	2500		
D. Tail Turning Radius	mm	3150		
E. Track Width	mm	1980		
F. Wheelbase	mm	2850		
G. Boom Length	mm	7000		
H. Stick Length	mm	3700		
I. Bulldozer Size	mm	2470*740		
J. Bulldozer Lifting/Support Height	mm	430/180		
K. Minimum Ground Clearance	mm	320		
L. Ground Clearance of Counterweight	mm	1210		
M. Maximum Lifting Height of the Cab	mm	1600		

Working Range and Digging Force			HT215K	
Describe	Unit	Size		
a. Maximum Grabbing Radius	mm	12037		
b. Maximum Unloading Height	mm	12997		
c. Maximum Grabbing Height	mm	9578		
d. Maximum Grabbing Weight	kg	2100		
e. Minimum Turning Radius	mm	3150		
f. Hydraulic System Pressure	Mpa	32		
g. Hydraulic System Flow Rate	L/min	2*239		
h. Stick Digging Force	Kn	119.5		
i. Fuel Tank Capacity	L	350		
j. Hydraulic Oil Tank Capacity	L	180		
k. Maximum Opening Width of the Grabber	mm	2321		
l. Grabber Rotatable Angle	°	360		
m. Gradient	°	30		
n. Rotation Speed	r/min	11		
o. Travel Speed	Km/h	28		
p. Braking Method	Four Wheel Oil Brake			
q. Shift Mode	Fully Hydraulic Automatic Transmission			



# HT215K    WHEEL EXCAVATOR WITH LIFTING CAB

## 山东帝盟重工机械有限公司

SHANDONG DIAMOND HEAVY INDUSTRY Co., Ltd

Telephone: 400-106-1996  
E-mail: dm@sddmzg.com  
International Trade: 86-534-7452888  
Website: www.sddmzg.com  
Address: Shandong Dezhou (Yucheng) National High tech Development Zone Diamond Industrial Park



(Website)



(WeChat)



(Tiktok)

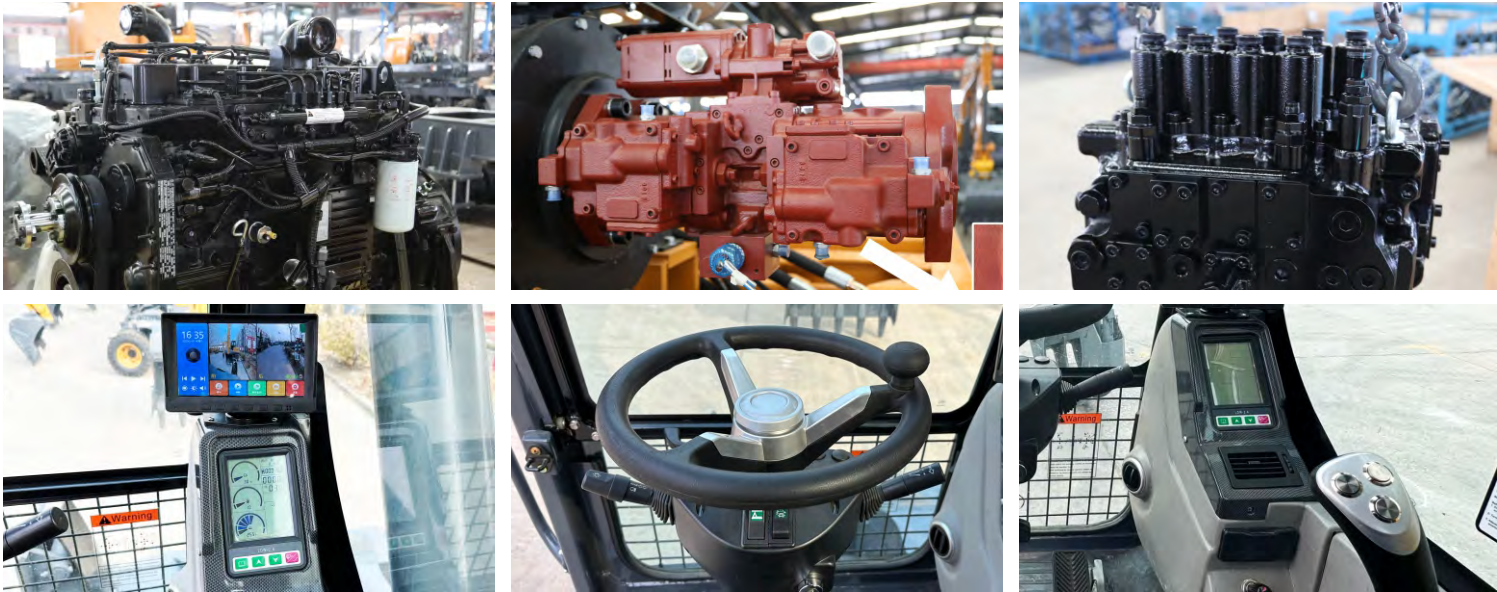
The pictures in this volume are for reference only, and the equipment is subject to the actual object. Shandong DIAMOND Heavy Industry has the right to improve and upgrade the equipment, as well as the final interpretation right.



# Wheel Excavator With Lifting Cab

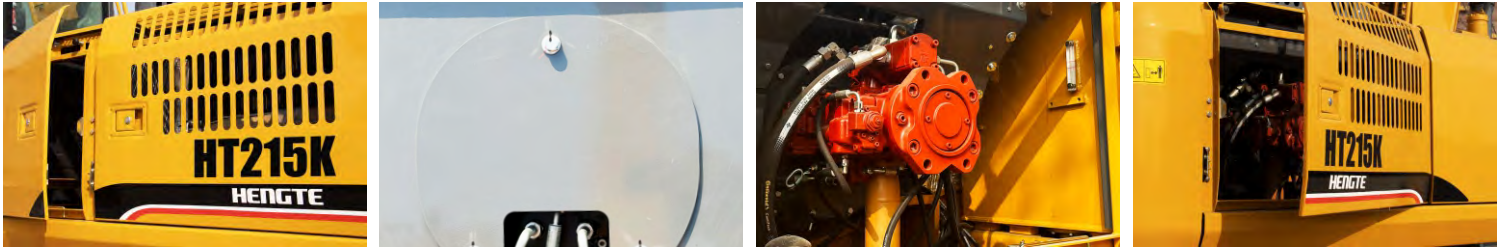


# Product Display



The Hengte HT215K excavator is a new generation fully hydraulic lifting cab wheeled excavator independently developed by DIAMOND Heavy Industry. It adopts a high-power and low fuel consumption National II standard electronic injection engine, ensuring the strong power and power reserve of the entire machine; The precise matching between the efficient hydraulic system and the bridge box ensures the arbitrary switching between working and walking states; The hydraulic system of the entire machine is matched with imported hydraulic components, which have the characteristics of "coordinated action, high reliability, safety and environmental protection, comfort and convenience". At the same time, customized configurations can be provided according to customer needs, which can adapt to the needs of different countries and customers.

# Convenient Maintenance: Open Panel Design



# Multiple Accessories To Choose From



# Advantages

## Comfortable

- A spacious and comfortable cab provides a wide and all-round view.
- A new type of suspension seat that conforms to ergonomics, thereby improving the comfort of driver operation.

## Configure

- The National II standard electronic fuel injection engine adopts newly developed fuel saving technology, with strong power.
- The original brand's main hydraulic system is perfectly matched with the engine, providing precise flow and improving work efficiency.

## Intelligence

- Intelligent driving computer is adopted, with big data analysis and storage function and timely warning prompt.

## Energy

- Full time four-wheel drive, equipped with high and low gears, with high-speed walking ability, able to achieve fast transitions.
- High driving power enables the vehicle to have flexible off-road capabilities, ensuring strong off-road performance.