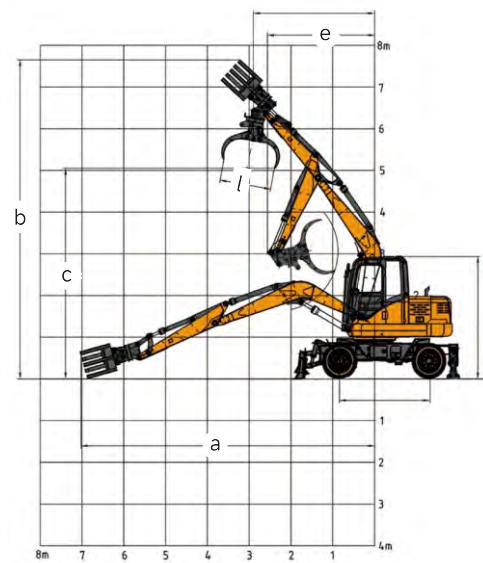
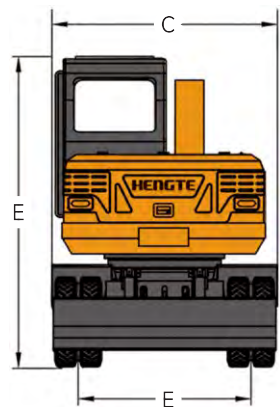
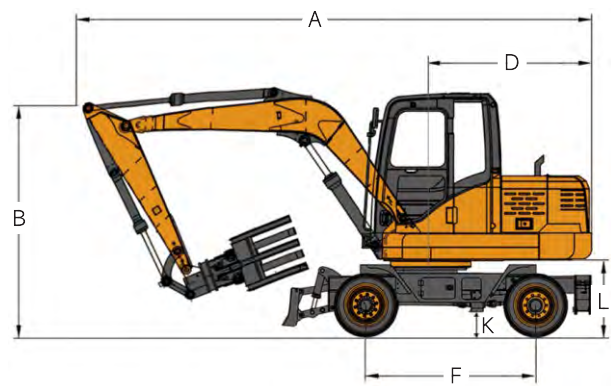


Technical Parameters		HT85W-Z	
Engine		Working Range	
Engine Type	YUCHAI YC4FA65-T300	Max. Grabbing Radius	7380mm
Power	48KW/2200rpm	Max. Unloading Height	5300mm
Weight		Grabbing Weight	
Overall Weight	7400kg	Max. Grabbing Weight	1000kg

Overall Dimension			HT85W-Z
Describe	Unit	Size	
A . Shipping Length	mm	6600	
B . Total Height During Transportation	mm	2900	
C . Overall Width	mm	2180	
D . Tail Turning Radius	mm	1850	
E . Track Width	mm	1665	
F . Wheelbase	mm	2360	
G . Boom Length	mm	3800	
H . Stick Length	mm	2000	
I . Bulldozer Size	mm	2100*400	
J . Bulldozer Lifting/Support Height	mm	380/60	
K . Minimum Ground Clearance	mm	220	
L . Ground Clearance of Counterweight	mm	960	

Working Range and Digging Force		HT85W-Z
Describe	Unit	Size
a . Maximum Grabbing Radius	mm	7380
b . Maximum Unloading Height	mm	7540
c . Maximum Grabbing Height	mm	5300
d . Maximum Grabbing Weight	kg	1000
e . Minimum Turning Radius	mm	1850
f . Hydraulic System Pressure	Mpa	26
g . Hydraulic System Flow Rate	L/min	140
h . Stick Digging Force	Kn	25
i . Fuel Tank Capacity	L	120
j . Hydraulic Oil Tank Capacity	L	130
k . Maximum Opening Width of the Gripper	mm	1250/1500
l . Gripper Rotatable Angle	°	360
m . Gradient	%	60
n . Rotation Speed	r/min	12-13
o . Travel Speed	Km/h	30
p . Braking Method	Four Wheel Air Brake/Oil Brake	
q . Shift Mode	Fully Hydraulic Automatic Transmission	



HENGTE



HT85W-Z WHEEL EXCAVATOR

山东帝盟重工机械有限公司
SHANDONG DIAMOND HEAVY INDUSTRY Co., Ltd

Telephone: 400-106-1996
E-mail: dm@sddmzg.com
International Trade: 86-534-7452888
Website: www.sddmzg.com
Address: Shandong Dezhou (Yucheng) National High tech Development Zone Diamond Industrial Park



(Website)



(WeChat)



(Tiktok)

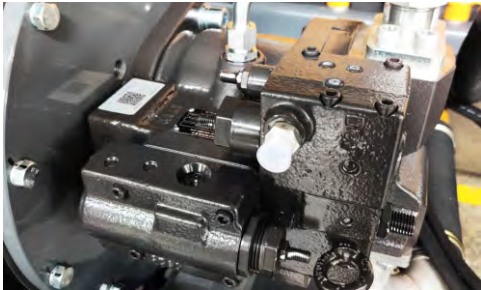
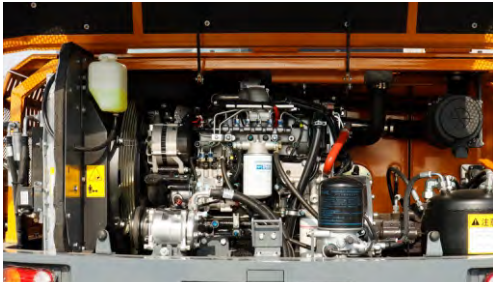
The pictures in this volume are for reference only, and the equipment is subject to the actual object. Shandong DIAMOND Heavy Industry has the right to improve and upgrade the equipment, as well as the final interpretation right.

山东帝盟重工机械有限公司
SHANDONG DIAMOND HEAVY INDUSTRY Co., Ltd

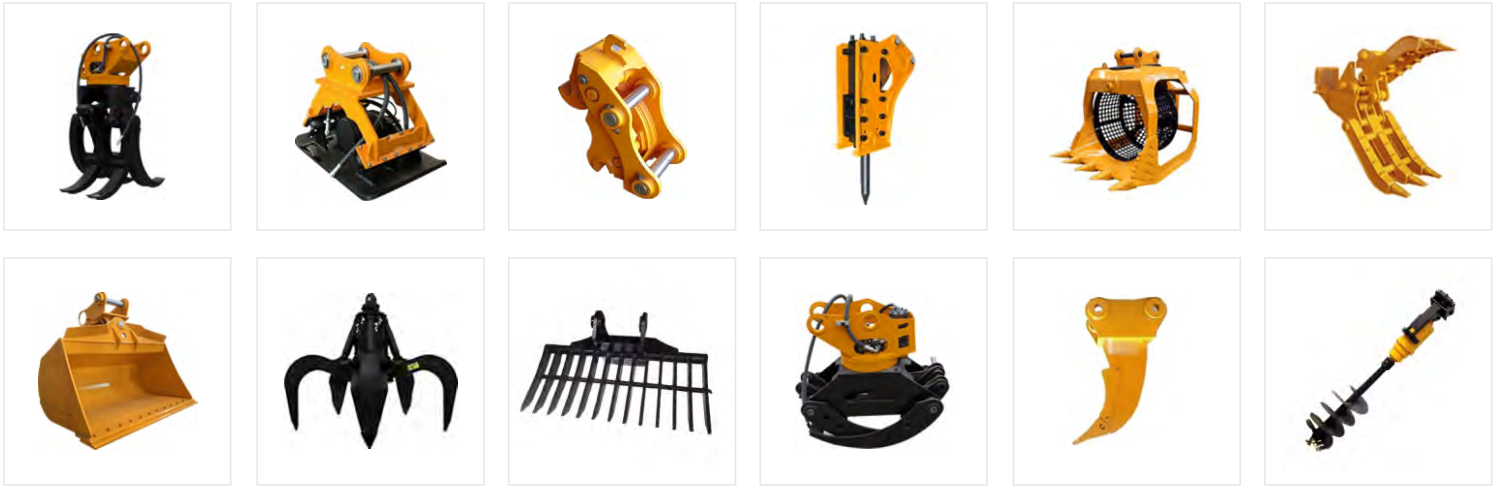
Fully Hydraulic Wheel Grabbing Machine



Image Display



Multiple Accessories To Choose From



The HT85W-Z grabbing machine is a new generation of fully hydraulic wheeled grabbing machine independently developed by DIAMOND Heavy Industry, which meets the National III emission standards and adopts a high-power and low fuel consumption standard electronic injection engine, ensuring the strong power and power reserve of the entire machine; The precise matching between the efficient hydraulic system and the bridge box ensures the arbitrary switching between working and walking states; The hydraulic system of the entire machine is matched with a load sensitive system, which has the characteristics of "coordinated action, high reliability, safety and environmental protection, comfort and convenience". At the same time, customized configurations can be provided according to customer needs, which can adapt to the needs of different countries and customers.

Convenient Maintenance: Open Panel Design



Advantages

Comfortable

- A spacious and comfortable cab provides a wide and all-round view.
- A new type of suspension seat that conforms to ergonomics, thereby improving the comfort of driver operation.

Configure

- The National III standard electronic fuel injection engine adopts newly developed fuel saving technology, with strong power.
- The original brand's main hydraulic system is perfectly matched with the engine, providing precise flow and improving work efficiency.

Intelligence

- Intelligent driving computer is adopted, with big data analysis and storage function and timely warning prompt.

Energy

- Full time four-wheel drive, equipped with high and low gears, with high-speed walking ability, able to achieve fast transitions.
- High driving power enables the vehicle to have flexible off-road capabilities, ensuring strong off-road performance.