

Technical Parameters

HT135W-G PLUS

Engine		Working Range	
Engine Type	YUCHAI YC4FA85-T300	Max. Grabbing Radius	7200mm
Power	62.5KW/2200rpm	Max. Unloading Height	6400mm
Weight		Grabbing Weight	
Overall Weight	9880kg	Max. Grabbing Weight	1800kg

Overall Dimension

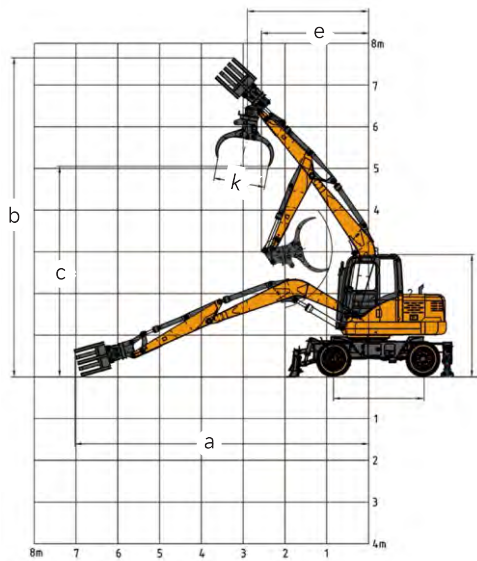
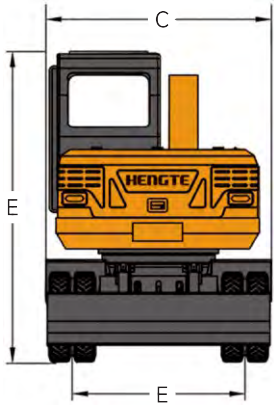
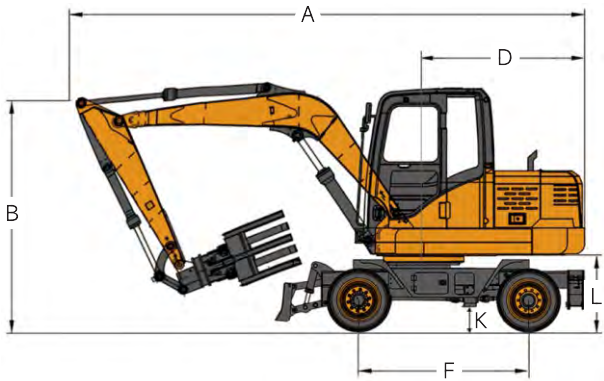
HT135W-G PLUS

Describe	Unit	Size
A . Shipping Length	mm	6900
B . Total Height During Transportation	mm	3000
C . Overall Width	mm	2300
D . Tail Turning Radius	mm	1890
E . Track Width	mm	1795
F . Wheelbase	mm	2620
G . Boom Length	mm	4000
H . Stick Length	mm	2600
I . Bulldozer Size	mm	2260*500
J . Bulldozer Lifting/Support Height	mm	480/60
K . Minimum Ground Clearance	mm	300
L . Ground Clearance of Counterweight	mm	1100

Working Range and Digging Force

HT135W-G PLUS

Describe	Unit	Size
a . Maximum Grabbing Radius	mm	7200
b . Maximum Grabbing Height	mm	7540
c . Maximum Unloading Height	mm	6400
d . Maximum Grabbing Weight	kg	1800
e . Minimum Turning Radius	mm	1890
f . Hydraulic System Pressure	Mpa	26
g . Hydraulic System Flow Rate	L/min	160
h . Stick Digging Force	Kn	58
i . Fuel Tank Capacity	L	160
j . Hydraulic Oil Tank Capacity	L	140
k . Maximum Opening Width of the Grabber	mm	1500
l . Grabber Rotatable Angle	°	360
m . Gradient	%	60
n . Rotation Speed	r/min	13
o . Travel Speed	Km/h	30
p . Braking Method	Four Wheel Air Brake	
q . Shift Mode	Mechanical 5-Speed Manual	



HENGTE



HT135W-G PLUS WHEELED GRAB EXCAVATOR

山东帝盟重工机械有限公司

SHANDONG DIAMOND HEAVY INDUSTRY Co., Ltd

Telephone: 400-106-1996

E-mail: dm@sddmzg.com

International Trade: 86-534-7452888

Website: www.sddmzg.com

Address: Shandong Dezhou (Yucheng) National High tech Development Zone Diamond Industrial Park



(Website)



(WeChat)



(Tiktok)

The pictures in this volume are for reference only, and the equipment is subject to the actual object. Shandong DIAMOND Heavy Industry has the right to improve and upgrade the equipment, as well as the final interpretation right.

山东帝盟重工机械有限公司

SHANDONG DIAMOND HEAVY INDUSTRY Co., Ltd

Manual Gear Wheeled Grab Excavator

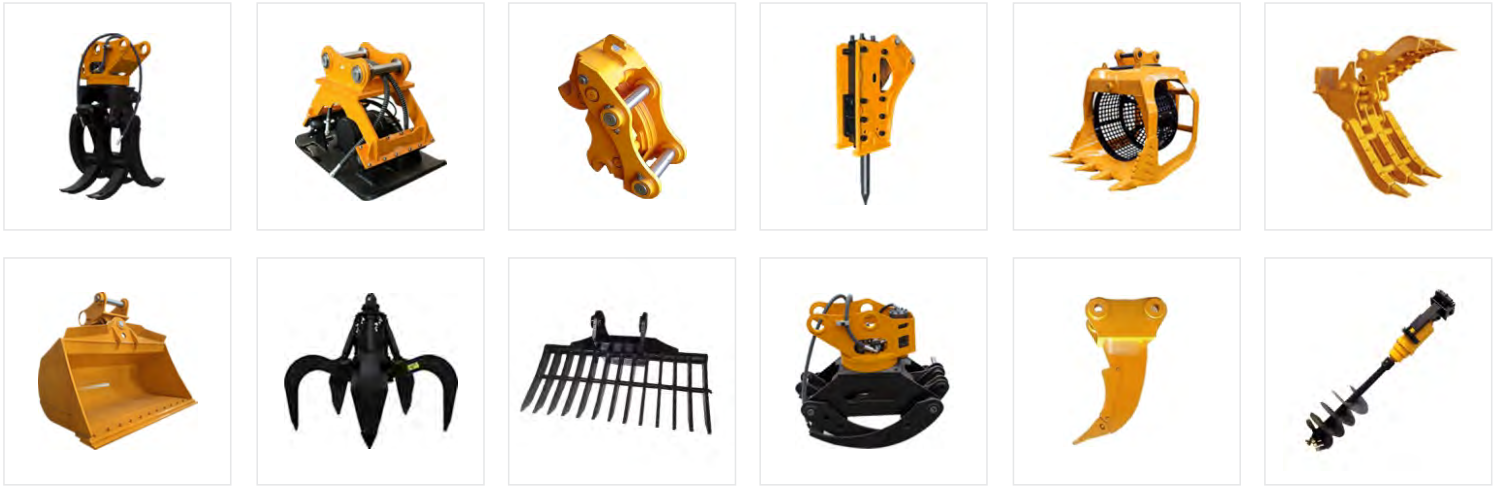


Image Display

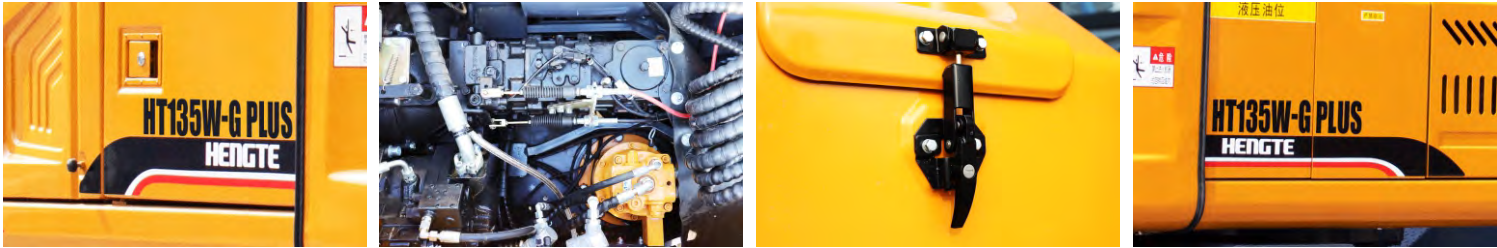


The HT135W-G PLUS excavator is a new generation mechanical 5-speed walking wheeled grab excavator independently developed by DIAMOND Heavy Industry. It adopts a high-power and low fuel consumption National III standard engine, ensuring the strong power and power reserve of the entire machine; The precise matching between the efficient hydraulic system and the bridge box ensures the arbitrary switching between working and walking states; The whole machine adopts a high-end hydraulic system, which has the characteristics of "fast walking, stable construction, maintenance free, and super energy-saving". At the same time, it can provide various special configuration options to meet the needs of different countries and customers.

Multiple Accessories To Choose From



Convenient Maintenance: Open Panel Design



Advantages

Comfortable

- The spacious and comfortable cab provides a wide range of views.
- A new suspension seat that conforms to ergonomics, thus improving the driver's operating comfort.

Configure

- The brand engine adopts newly developed fuel saving technology and has strong power.
- The original imported main hydraulic system is perfectly matched with the engine to provide accurate flow quantity, improve operation efficiency.

Intelligence

- Intelligent driving computer is adopted, with big data analysis and storage function and timely warning prompt

Energy

- Manual 5-speed, with high-speed walking ability, can achieve fast transitions.
- High driving power enables the entire vehicle to have flexible ability to overcome difficulties, ensuring strong off-road performance.