

Technical Parameters HT105W-G

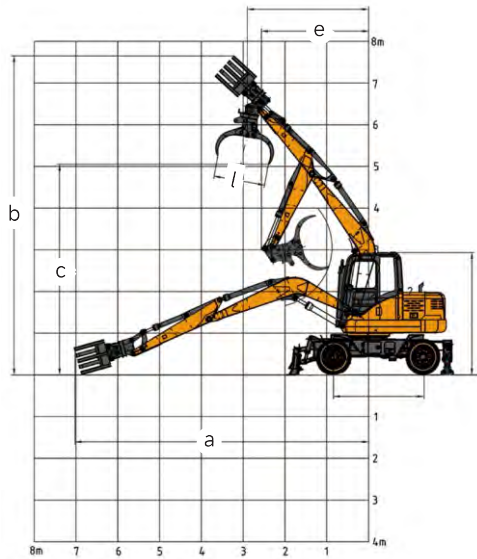
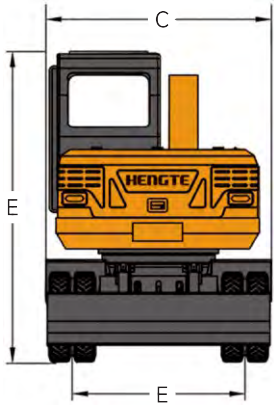
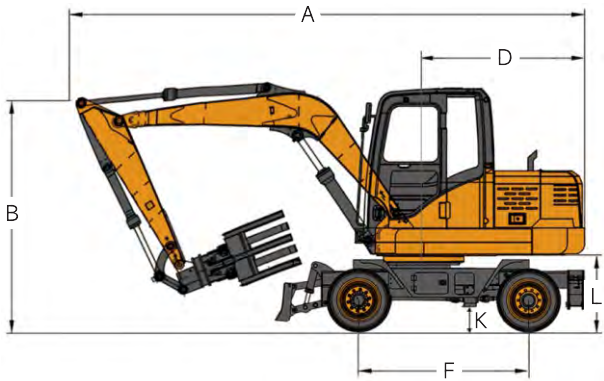
Engine		Working Range	
Engine Type	YUCHAI YC4FA85-T300	Max. Grabbing Radius	7450mm
Power	62.5KW/2200rpm	Max. Unloading Height	6000mm
Weight		Grabbing Weight	
Overall Weight	8680kg	Max. grabbing Weight	1500kg

Overall Dimension HT105W-G

Describe	Unit	Size
A . Shipping Length	mm	6500
B . Total Height During Transportation	mm	2890
C . Overall Width	mm	2200
D . Tail Turning Radius	mm	2020
E . Track Width	mm	1700
F . Wheelbase	mm	2380
G . Boom Length	mm	3800
H . Stick Length	mm	2400
I . Bulldozer Size	mm	2100*500
J . Bulldozer Lifting/Support Height	mm	385/80
K . Minimum Ground Clearance	mm	250
L . Ground Clearance of Counterweight	mm	1100

Working Range and Digging Forec HT105W-G

Describe	Unit	Size
a . Maximum Grabbing Radius	mm	7450
b . Maximum Grabbing Height	mm	7630
c . Maximum Unloading Height	mm	6500
d . Maximum Grabbing Weight	kg	1500
e . Minimum Turning Radius	mm	2020
f . Hydraulic System Pressure	Mpa	26
g . Hydraulic System Flow Rate	L/min	140
h . Stick Digging Force	Kn	22
i . Fuel Tank Capacity	L	160
j . Hydraulic Oil Tank Capacity	L	140
k . Maximum Opening Width of the grabber	mm	1450
l . Grabber Rotatable Angle	°	360
m . Gradient	%	60
n . Rotation Speed	r/min	12
o . Travel Speed	Km/h	30
p . Braking Method	Four Wheel Air Brake	
q . Shift Mode	Mechanical 5-speed Manual	



HT105W-G WHEELED GRAB EXCAVATOR

山东帝盟重工机械有限公司 SHANDONG DIAMOND HEAVY INDUSTRY Co., Ltd

Telephone: 400-106-1996  
E-mail: dm@sddmzg.com  
International Trade: 86-534-7452888  
Website: www.sddmzg.com  
Address: Shandong Dezhou (Yucheng) National High tech Development Zone Diamond Industrial Park



(Website)



(WeChat)



(Tiktok)

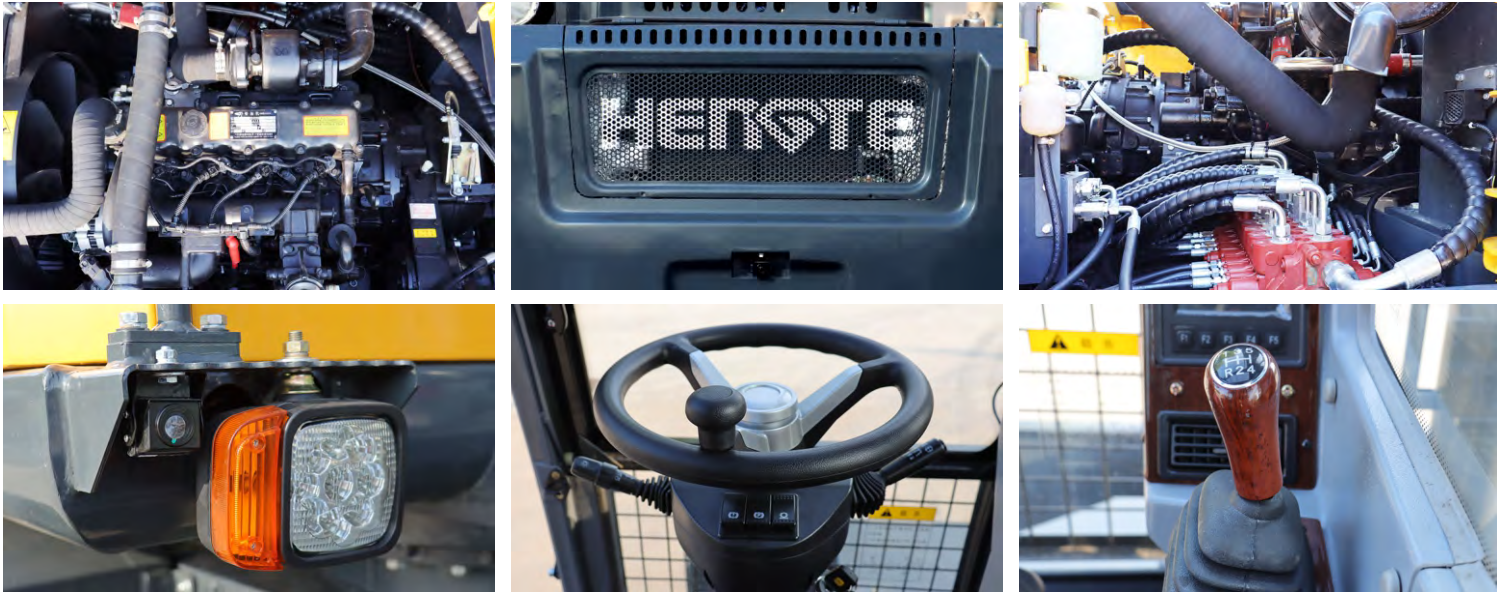
The pictures in this volume are for reference only, and the equipment is subject to the actual object. Shandong DIAMOND Heavy Industry has the right to improve and upgrade the equipment, as well as the final interpretation right.



# Manual Gear Wheeled Grab Excavator

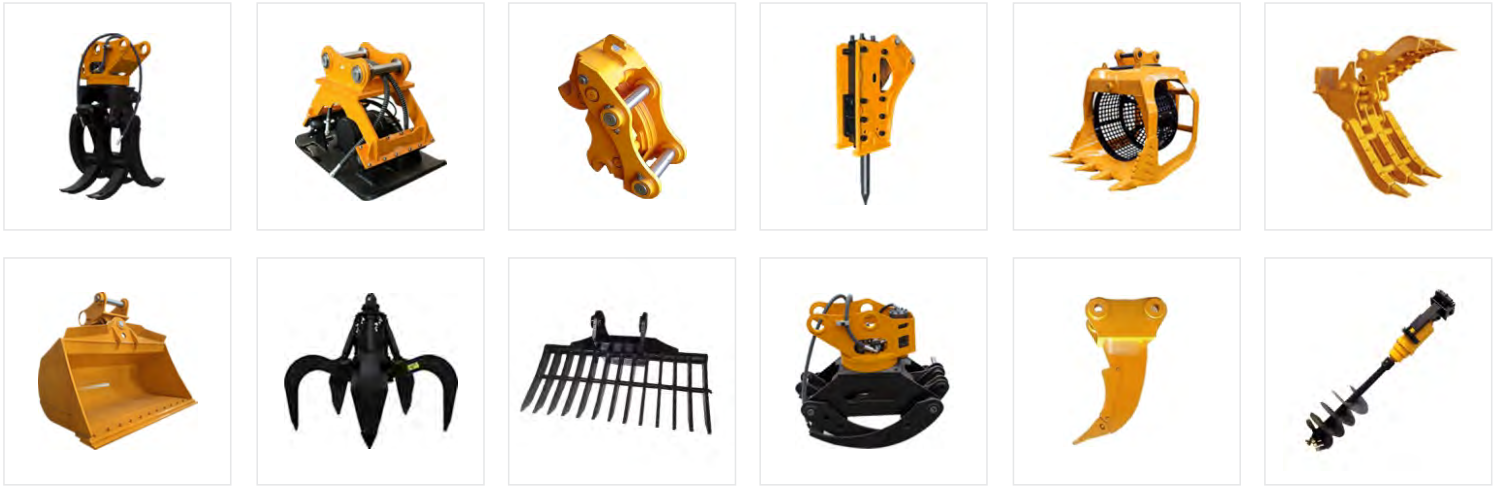


# Image Display

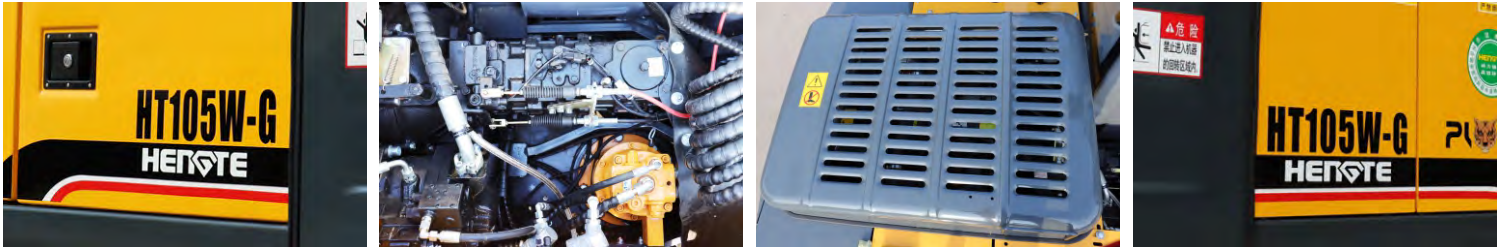


The HT105W-G excavator is a new generation mechanical 5-speed walking wheeled grab excavator independently developed by DIAMOND Heavy Industry. It adopts a high-power and low fuel consumption National III standard engine, ensuring the strong power and power reserve of the entire machine; The precise matching between the efficient hydraulic system and the bridge box ensures the arbitrary switching between working and walking states; The whole machine adopts a high-end hydraulic system, which has the characteristics of "fast walking, stable construction, maintenance free, and super energy-saving". At the same time, it can provide various special configuration options to meet the needs of different countries and customers.

# Multiple Accessories To Choose From



# Convenient Maintenance: Open Panel Design



# Advantages

## Comfortable

- The spacious and comfortable cab provides a wide range of views.
- A new suspension seat that conforms to ergonomics, thus improving the driver's operating comfort.

## Configure

- The brand engine adopts newly developed fuel saving technology and has strong power.
- The original imported main hydraulic system is perfectly matched with the engine to provide accurate flow quantity, improve operation efficiency.

## Intelligence

- Intelligent driving computer is adopted, with big data analysis and storage function and timely warning prompt

## Energy

- Manual 5-speed, with high-speed walking ability, can achieve fast transitions.
- High driving power enables the entire vehicle to have flexible ability to overcome difficulties, ensuring strong off-road performance.