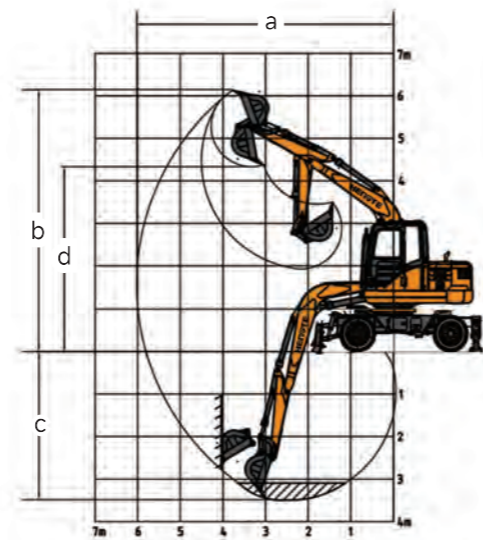
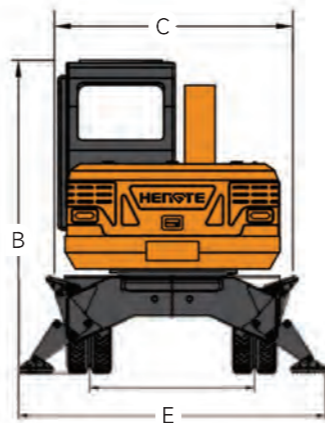
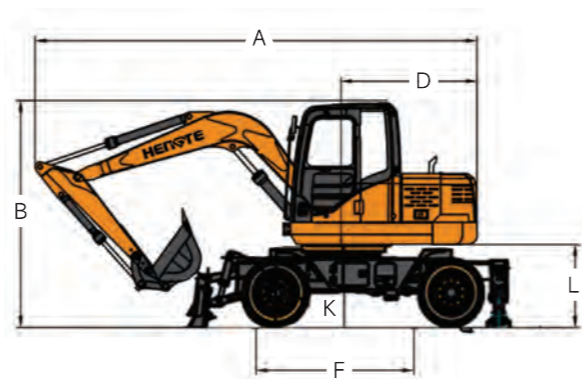


Technical Parameters		HT90W	
Engine		Working Range	
Engine Type	YUCHAI YC4FA65-T300	Max. Digging Radius	6840mm
Power	48kW/2200rpm	Max. Unloading Height	5300mm
Weight		Bucket	
Overall Weight	7400kg	Bucket Capacity	0.30m³

Overall Dimension			HT90W
Describe	Unit	Size	
A. Shipping Length	mm	6600	
B. Total Height During Transportation	mm	2900	
C. Overall Width	mm	2180	
D. Tail Turning Radius	mm	1855	
E. Track Width	mm	1665	
F. Wheelbase	mm	2360	
G. Boom Length	mm	3800	
H. Stick Length	mm	2000	
I. Bulldozer Size	mm	2150*400	
J. Bulldozer Lifting/Support Height	mm	380/60	
K. Minimum Ground Clearance	mm	220	
L. Ground Clearance of Counterweight	mm	960	

Working Range and Digging Force			HT90W
Describe	Unit	Size	
a. Maximum Digging Radius	mm	6840	
b. Maximum Digging Height	mm	7540	
c. Maximum Digging Depth	mm	3735	
d. Maximum Unloading Height	mm	5300	
e. Minimum Turning Radius	mm	1850	
f. Bucket Capacity	m³	0.30	
g. Hydraulic System Pressure	MPa	26	
h. Hydraulic System Flow Rate	L/min	140	
i. Bucket Digging Force	kN	45	
j. Stick Digging Force	kN	22	
k. Fuel Tank Capacity	L	120	
l. Hydraulic Oil Tank Capacity	L	130	
m. Gradient	%	≥60	
n. Rotation Speed	r/min	12-13	
o. Travel Speed	km/h	30	
p. Braking Method	Four Wheel Air Brake/Oil Brake		
q. Shift Mode	Fully Hydraulic Automatic Transmission		



HT90W WHEEL EXCAVATOR

山东帝盟重工机械有限公司

SHANDONG DIAMOND HEAVY INDUSTRY Co., Ltd

Telephone: 400-106-1996
E-mail: dm@sddmzg.com
International Trade: 86-534-7452888
Website: www.sddmzg.com
Address: National High-tech Industrial Development Zone, Yucheng City, Dezhou City, Shandong Province, China.



(Website)



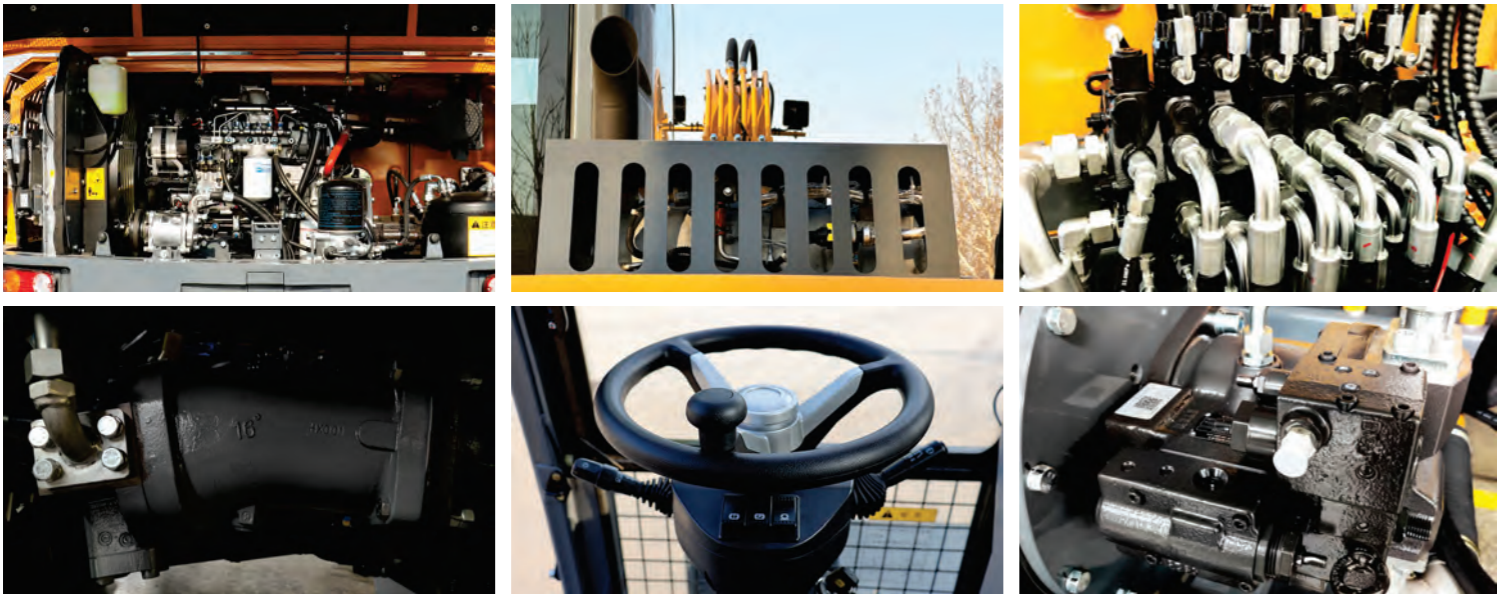
(WeChat)



(Tiktok)

The pictures in this volume are for reference only, and the equipment is subject to the actual object. Shandong DIAMOND Heavy Industry has the right to improve and upgrade the equipment, as well as the final interpretation right.

Fully Hydraulic Wheeled Excavator



The HT90W excavator is a new generation fully hydraulic wheeled excavator independently developed by DIAMOND Heavy Industries, which meets the National III emission standards and adopts a high-power and low fuel consumption standard electronic injection engine, ensuring the strong power and power reserve of the entire machine; The precise matching between the efficient hydraulic system and the bridge box ensures the arbitrary switching between working and walking states; The hydraulic system of the entire machine is matched with a load sensitive system, which has the characteristics of "coordinated action, high reliability, safety and environmental protection, comfort and convenience". At the same time, customized configurations can be provided according to customer needs, which can adapt to the needs of different countries and customers.

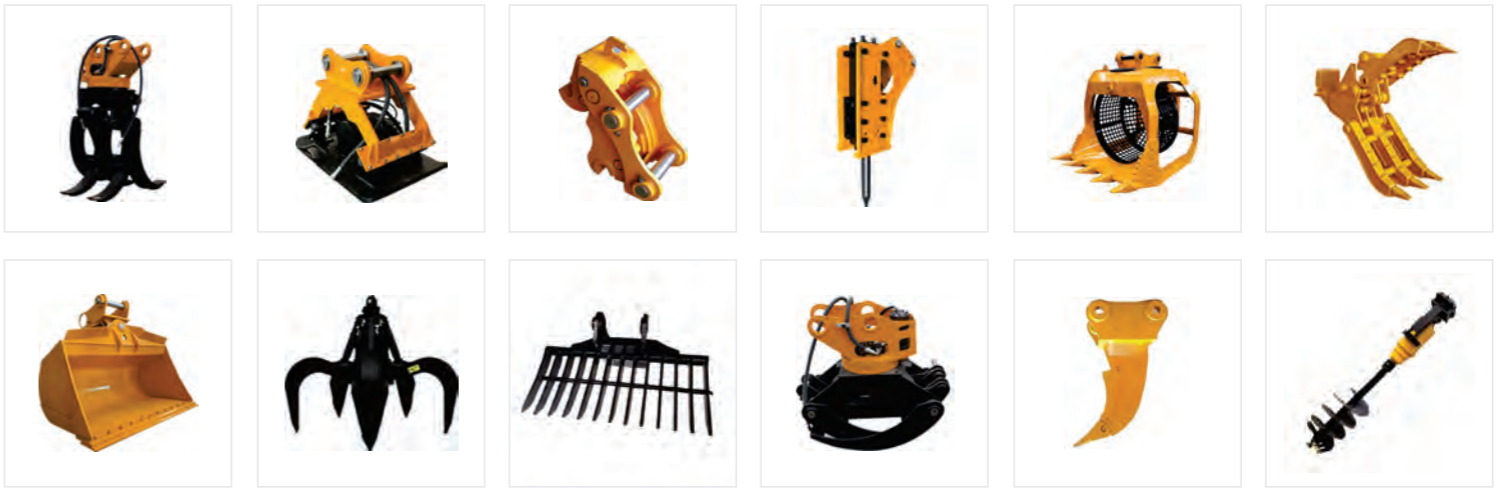
Convenient Maintenance: Open Panel Design



Product Display



Multiple Accessories To Choose From



Advantages

Comfortable

- A spacious and comfortable cab provides a wide and all-round view.
- A new type of suspension seat that conforms to ergonomics, thereby improving the comfort of driver operation.

Configure

- The National III standard electronic fuel injection engine adopts newly developed fuel saving technology, with strong power.
- The original brand's main hydraulic system is perfectly matched with the engine, providing precise flow and improving work efficiency.

Intelligence

- Intelligent driving computer is adopted, with big data analysis and storage function and timely warning prompt.

Energy

- Full time four-wheel drive, equipped with high and low gears, with high-speed walking ability, able to achieve fast transitions.
- High driving power enables the vehicle to have flexible off-road capabilities, ensuring strong off-road performance.