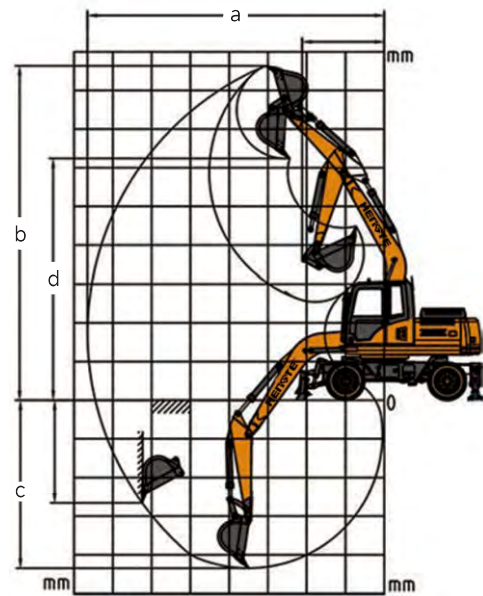
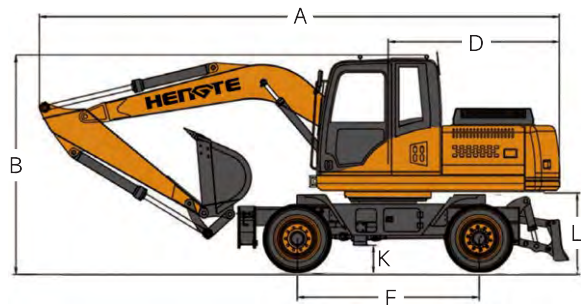


Technical Parameters		HT160W PLUS	
Engine		Working Range	
Engine Type	YUCHAI YC6A190Z-T20(6cylinders)	Max. Digging Radius	8060mm
Power	140kW/2300rpm	Max. Unloading Height	6300mm
Weight		Bucket	
Overall Weight	14500kg	Bucket Capacity	0.60m³

Overall Dimension			HT160W PLUS
Describe	Unit	Size	
A. Shipping Length	mm	7900	
B. Total Height During Transportation	mm	3255	
C. Overall Width	mm	2580	
D. Tail Turning Radius	mm	2395	
E. Track Width	mm	1900	
F. Wheelbase	mm	2645	
G. Boom Length	mm	4600	
H. Stick Length	mm	2200	
I. Bulldozer Size	mm	2500*640	
J. Bulldozer Lifting/Support Height	mm	450/110	
K. Minimum Ground Clearance	mm	320	
L. Ground Clearance of Counterweight	mm	1200	

Working Range and Digging Force		HT160W PLUS
Describe	Unit	Size
a . Maximum Digging Radius	mm	8060
b . Maximum Digging Height	mm	8720
c . Maximum Digging Depth	mm	4865
d . Maximum Unloading Height	mm	6300
e . Minimum Turning Radius	mm	2395
f . Bucket Capacity	m³	0.60
g . Hydraulic System Pressure	MPa	32
h . Hydraulic System Flow Rate	L/min	2*130
i . Bucket Digging Force	kN	95
j . Arm end Digging Force	kN	72
k . Fuel Tank Capacity	L	220
l . Hydraulic Oil Tank Capacity	L	180
m. Gradient Ability 70% to 35° Degrees	%	70%/35°
n . Rotation Speed	r/min	13-14
o . Travel Speed(H/L)	km/h	30/10
p . Braking Method	Four Wheel Oil Brake	
q . Shift Mode	Fully Hydraulic Automatic Transmission	



HEROTE



HT160W PLUS WHEEL EXCAVATOR

山东帝盟重工机械有限公司  
SHANDONG DIAMOND HEAVY INDUSTRY Co., Ltd

Telephone: 400-106-1996  
E-mail: dm@sddmzg.com  
International Trade: 86-534-7452888  
Website: www.sddmzg.com  
Address: National High-tech Industrial Development Zone, Yucheng City, Dezhou City, Shandong Province, China.



(Website)



(WeChat)



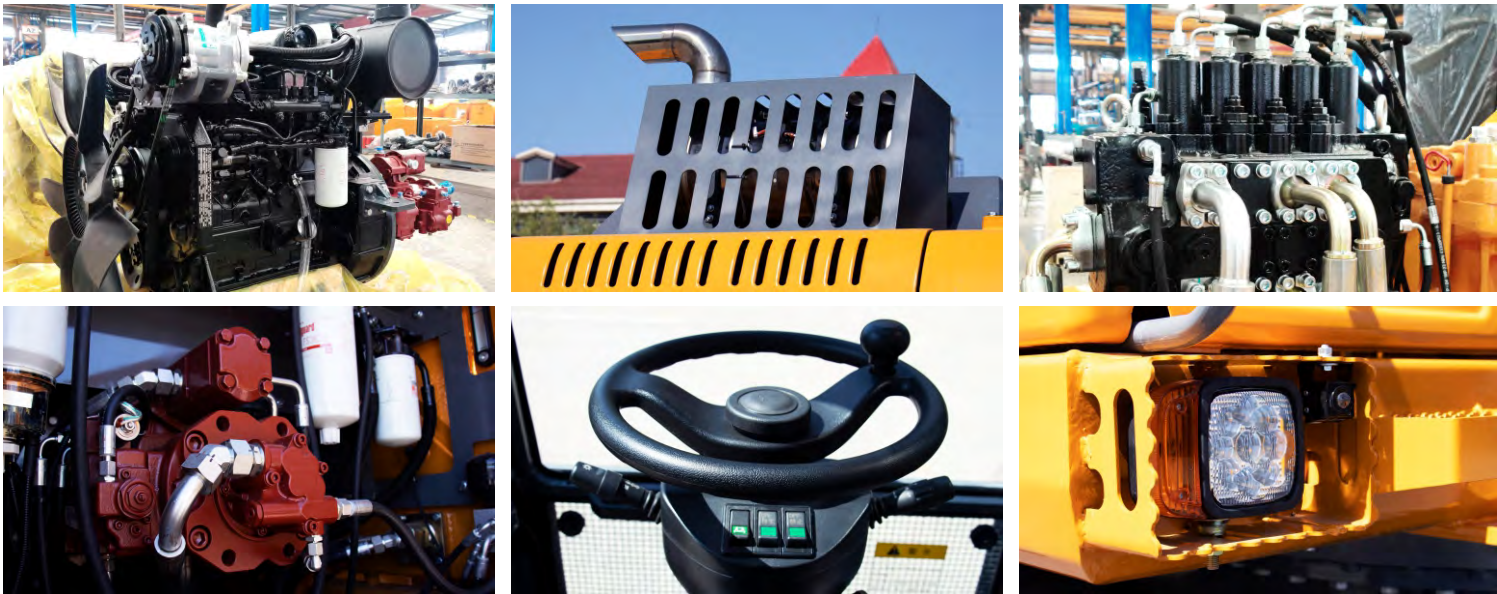
(Tiktok)

The pictures in this volume are for reference only, and the equipment is subject to the actual object. Shandong DIAMOND Heavy Industry has the right to improve and upgrade the equipment, as well as the final interpretation right.

山东帝盟重工机械有限公司  
SHANDONG DIAMOND HEAVY INDUSTRY Co., Ltd

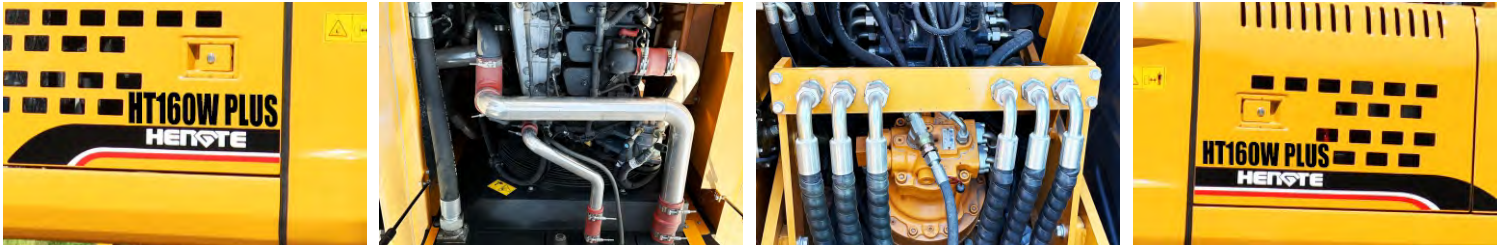


# Fully Hydraulic Wheeled Excavator



The HT160W excavator is a new generation fully hydraulic wheeled excavator independently developed by DIAMOND Heavy Industries, which meets the National III emission standards and adopts a high-power and low fuel consumption standard electronic injection engine, ensuring the strong power and power reserve of the entire machine; The precise matching between the efficient hydraulic system and the bridge box ensures the arbitrary switching between working and walking states; The hydraulic system of the entire machine is matched with a load sensitive system, which has the characteristics of "coordinated action, high reliability, safety and environmental protection, comfort and convenience". At the same time, customized configurations can be provided according to customer needs, which can adapt to the needs of different countries and customers.

## Convenient Maintenance: Open Panel Design



# Product Display



## Multiple Accessories To Choose From



## Advantages

### Comfortable

- A spacious and comfortable cab provides a wide and all-round view.
- A new type of suspension seat that conforms to ergonomics, thereby improving the comfort of driver operation.

### Configure

- The National III standard electronic fuel injection engine adopts newly developed fuel saving technology, with strong power.
- The original brand's main hydraulic system is perfectly matched with the engine, providing precise flow and improving work efficiency.

### Intelligence

- Intelligent driving computer is adopted, with big data analysis and storage function and timely warning prompt.

### Energy

- Full time four-wheel drive, equipped with high and low gears, with high-speed walking ability, able to achieve fast transitions.
- High driving power enables the vehicle to have flexible off-road capabilities, ensuring strong off-road performance.