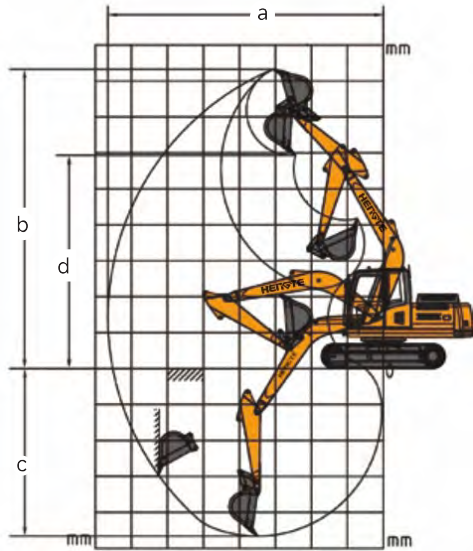
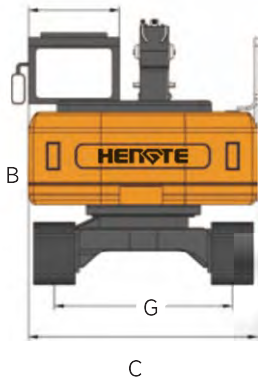
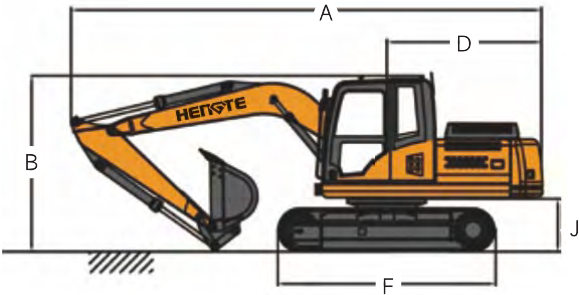


Technical Parameters		HT230	
Engine		Working Range	
Engine Type	Cummins QSB5.9-C180-II	Max. Digging Radius	9935mm
Power	132kW/2200rpm	Max. Unloading Height	6850mm
Weight		Bucket	
Overall Weight	22000kg	Bucket Capacity	1.0m ³

Overall Dimension			HT230
Describe	Unit	Size	
A. Shipping Length	mm	9060	
B. Total Height During Transportation	mm	3070	
C. Overall Width	mm	3000	
D. Tail Turning Radius	mm	2820	
E. Turntable Width	mm	2500	
F. Track Length	mm	4445	
G. Track Gauge	mm	2390	
I. Track Width	mm	600	
J. Ground Clearance of Counterweight	mm	1100	
K. Minimum Ground Clearance	mm	460	

Working Range and Digging Force			HT230
Describe	Unit	Size	
a. Maximum Digging Radius	mm	9935	
b. Maximum Digging Height	mm	9750	
c. Maximum Digging Depth	mm	6650	
d. Maximum Unloading Height	mm	6850	
e. Hydraulic System Pressure	MPa	32	
f. Hydraulic System Flow Rate	L/min	2*224	
g. Bucket Digging Force	kN	150	
h. Stick Digging Force	kN	105	
i. Fuel Tank Capacity	m ³	1.0	
j. Rotation Speed	r/min	12	
k. Travel Speed	km/h	2/4	



HT230 CRAWLER EXCAVATOR

山东帝盟重工机械有限公司

SHANDONG DIAMOND HEAVY INDUSTRY Co., Ltd

Telephone: 400-106-1996
E-mail: dm@sddmzg.com
International Trade: 86-534-7452888
Website: www.sddmzg.com
Address: National High-tech Industrial Development Zone, Yucheng City, Dezhou City, Shandong Province, China.



(Website)



(WeChat)



(Tiktok)

The pictures in this volume are for reference only, and the equipment is subject to the actual object. Shandong DIAMOND Heavy Industry has the right to improve and upgrade the equipment, as well as the final interpretation right.



山东帝盟重工机械有限公司
SHANDONG DIAMOND HEAVY INDUSTRY Co., Ltd

Fully Hydraulic Crawler Excavator



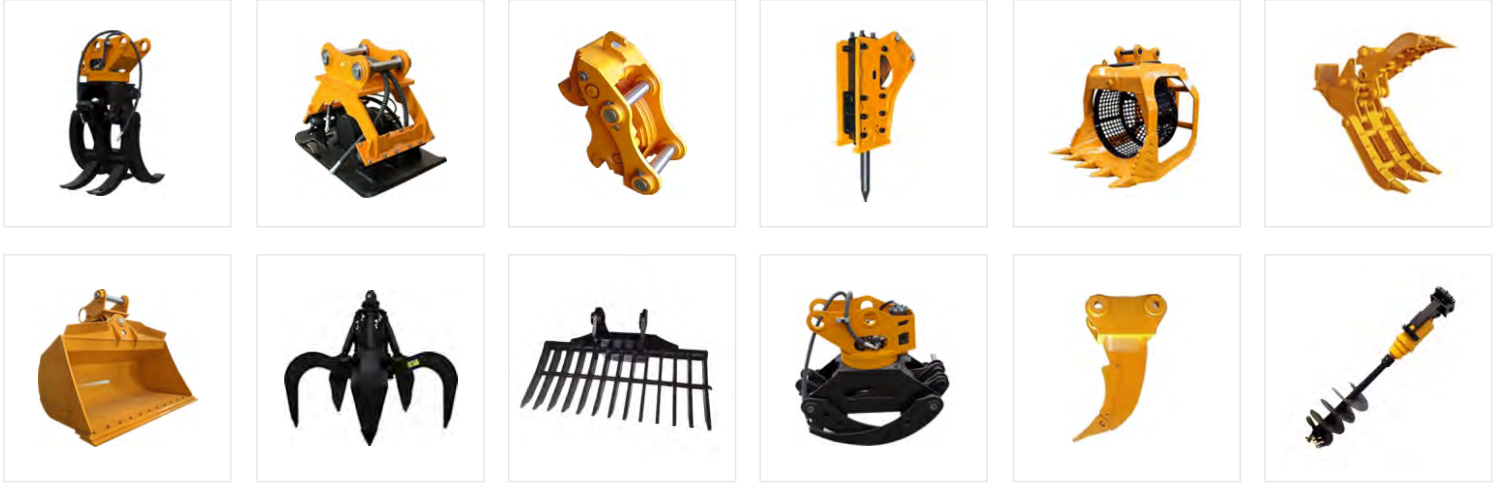
Product Display



Multiple Accessories To Choose From



The HT230 excavator is a new generation of fully hydraulic tracked excavator independently developed by DIAMOND Heavy Industries. It adopts a high-power and low fuel consumption National III standard engine, ensuring the strong power and power reserve of the entire machine; The hydraulic system of the entire machine is matched with imported hydraulic components, which have the characteristics of high reliability, genuine price, safety and environmental protection, comfort and convenience. At the same time, various special configurations can be provided to meet the needs of different countries and customers.



Advantages

Comfortable <ul style="list-style-type: none">● A spacious and comfortable cab provides a wide and all-round view.● A new type of suspension seat that conforms to ergonomics, thereby improving the comfort of driver operation.	Intelligence <ul style="list-style-type: none">● Intelligent driving computer is adopted, with big data analysis and storage function and timely warning prompt.
Configure <ul style="list-style-type: none">● The National III standard electronic fuel injection engine adopts newly developed fuel saving technology, with strong power.● The original brand's main hydraulic system is perfectly matched with the engine, providing precise flow and improving work efficiency.	Upgrade <ul style="list-style-type: none">● The multiple oil filtration system integrates three filters, making service more convenient.● The steel plates in key parts such as the boom and bucket are reinforced to better adapt to harsh working conditions.